



STATE OF NEW YORK
OFFICE OF GENERAL SERVICES
DESIGN AND CONSTRUCTION GROUP
THE GOVERNOR NELSON A. ROCKEFELLER
EMPIRE STATE PLAZA
ALBANY, NY 12242



ADDENDUM NO. 2 TO PROJECT NO. 44648

**CONSTRUCTION WORK
CONSTRUCT ADDITION, SALT STORAGE BUILDING
MAINTENANCE HEADQUARTERS
DOT REGION 7, ST. LAWRENCE COUNTY
7280 ROUTE 11, POTSDAM, NY 13676**

August 2, 2013

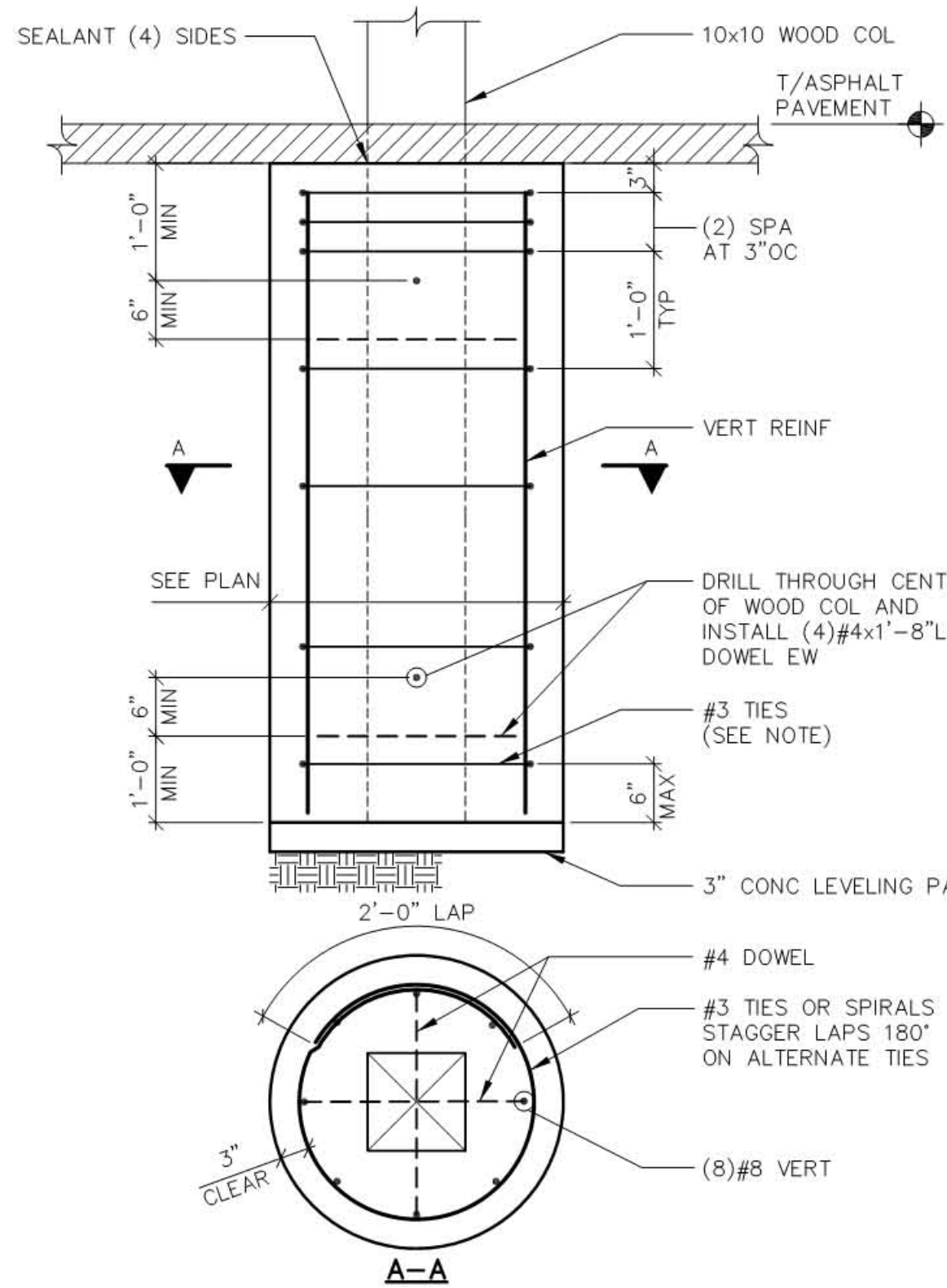
NOTE: This Addendum forms a part of the Contract Documents. Insert it in the Project Manual.
Acknowledge receipt of this Addendum in the space provided on the Bid Form.

DRAWINGS:

1. Addendum Drawing:
 - a. Drawing No. S-104 is attached to this Addendum and forms part of the Contract Documents.

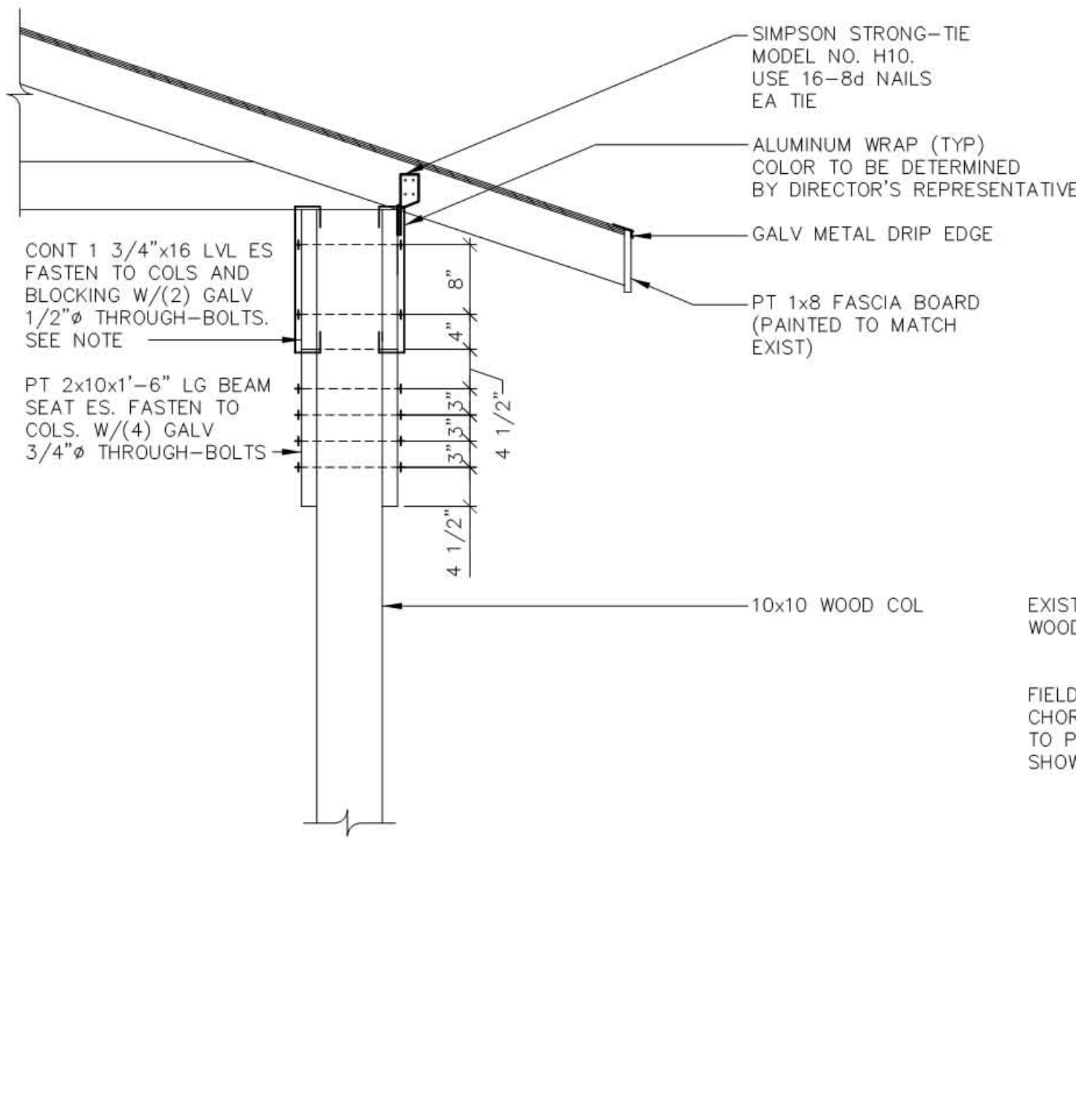
END OF ADDENDUM

James Dirolf, P.E.
Director of Design



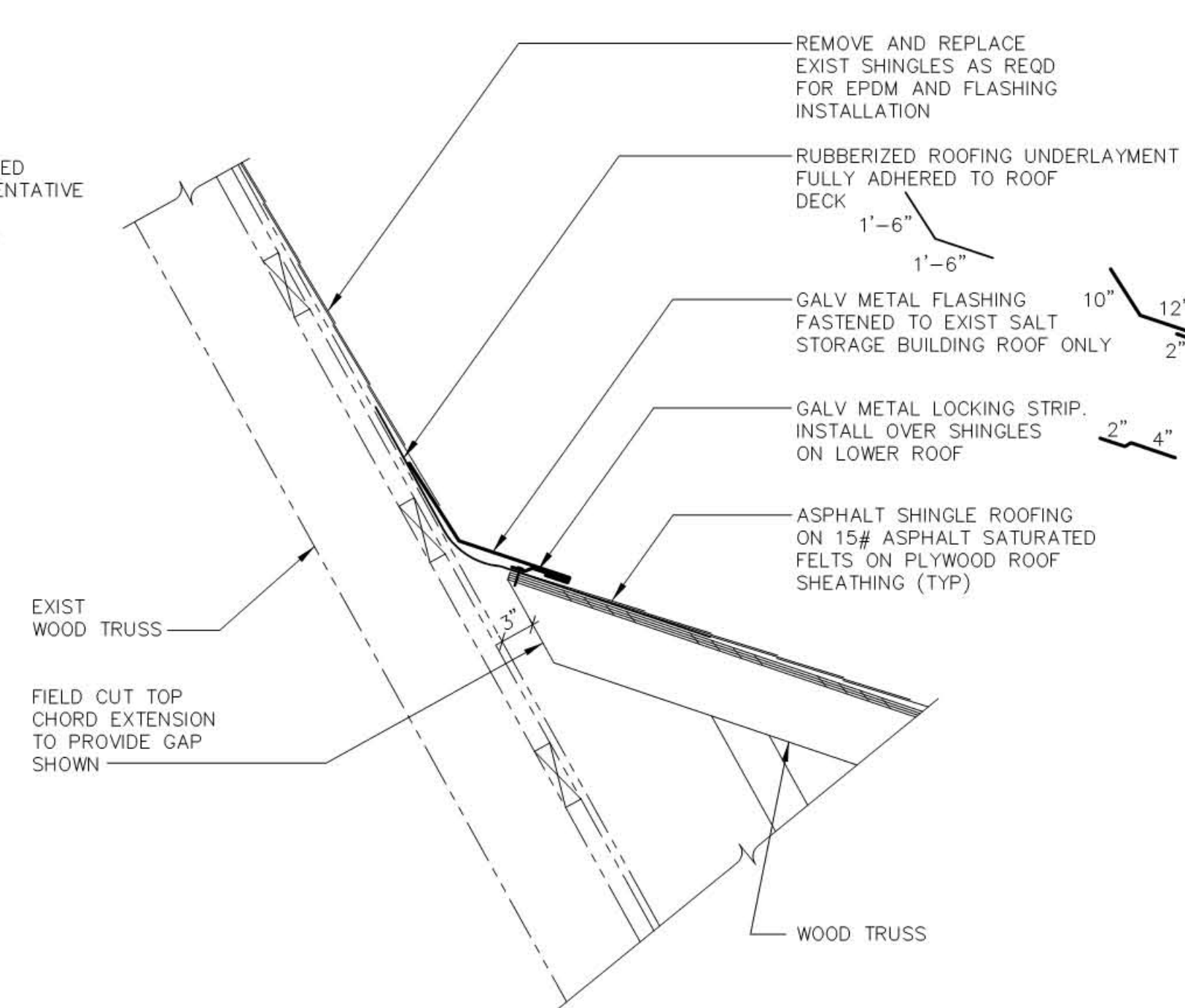
1 SECTION AT CONCRETE PIER
S-104 SCALE: 3/4" = 1'-0"

NOTE:
CONTRACTOR'S OPTION TO USE #4 SPIRAL REINFORCEMENT WITH 3" CLEAR SPACING BETWEEN TURNS OF THE SPIRAL.

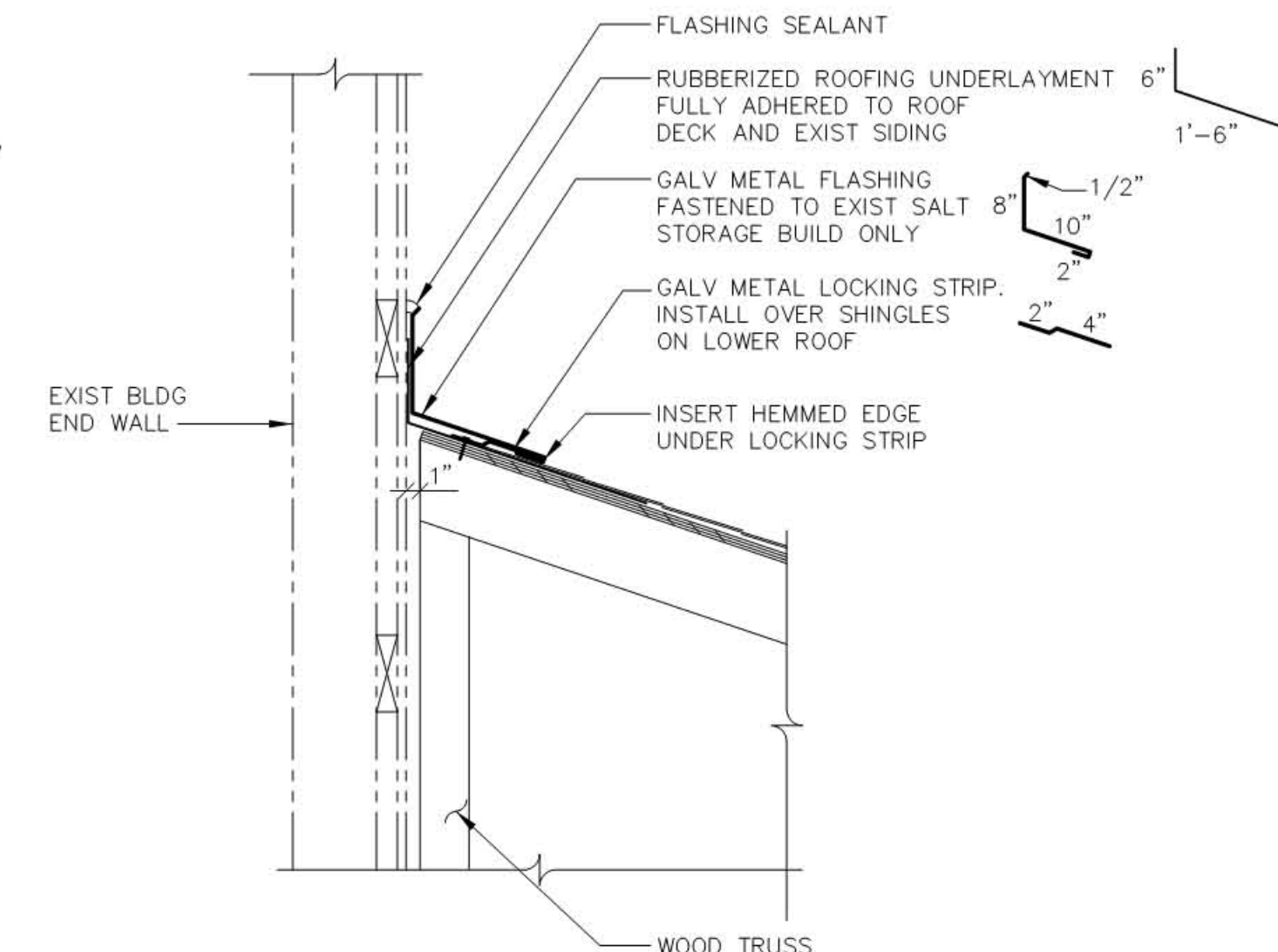


2 SECTION AT TRUSS BEARING
S-104 SCALE: 3/4" = 1'-0"

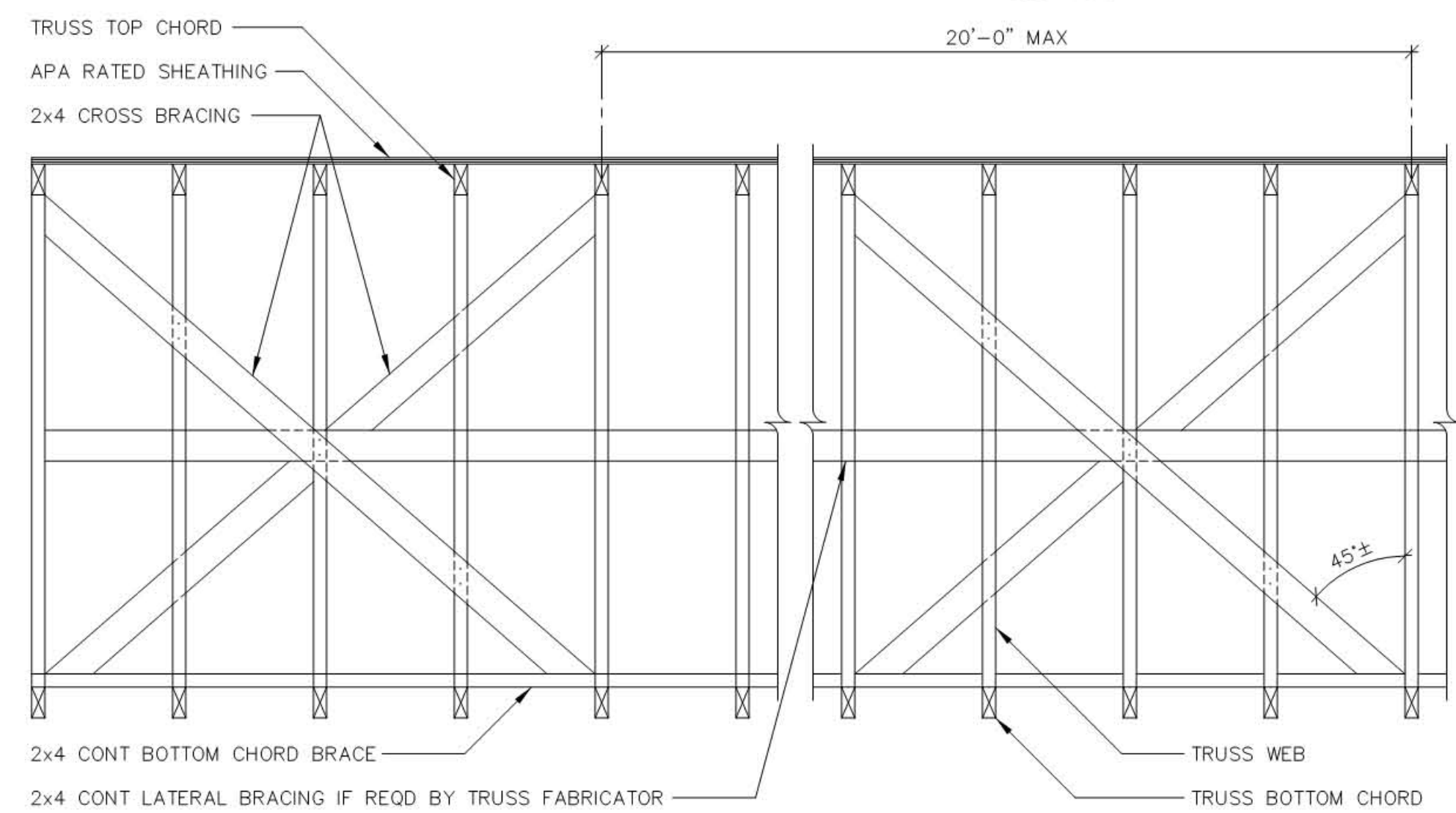
NOTE:
SPLICE LVL'S AT CENTERLINE OF COLUMN, STAGGER SPLICES, PROVIDE (4) GALVANIZED 1/2" THROUGH-BOLTS AT SPLICE LOCATION.



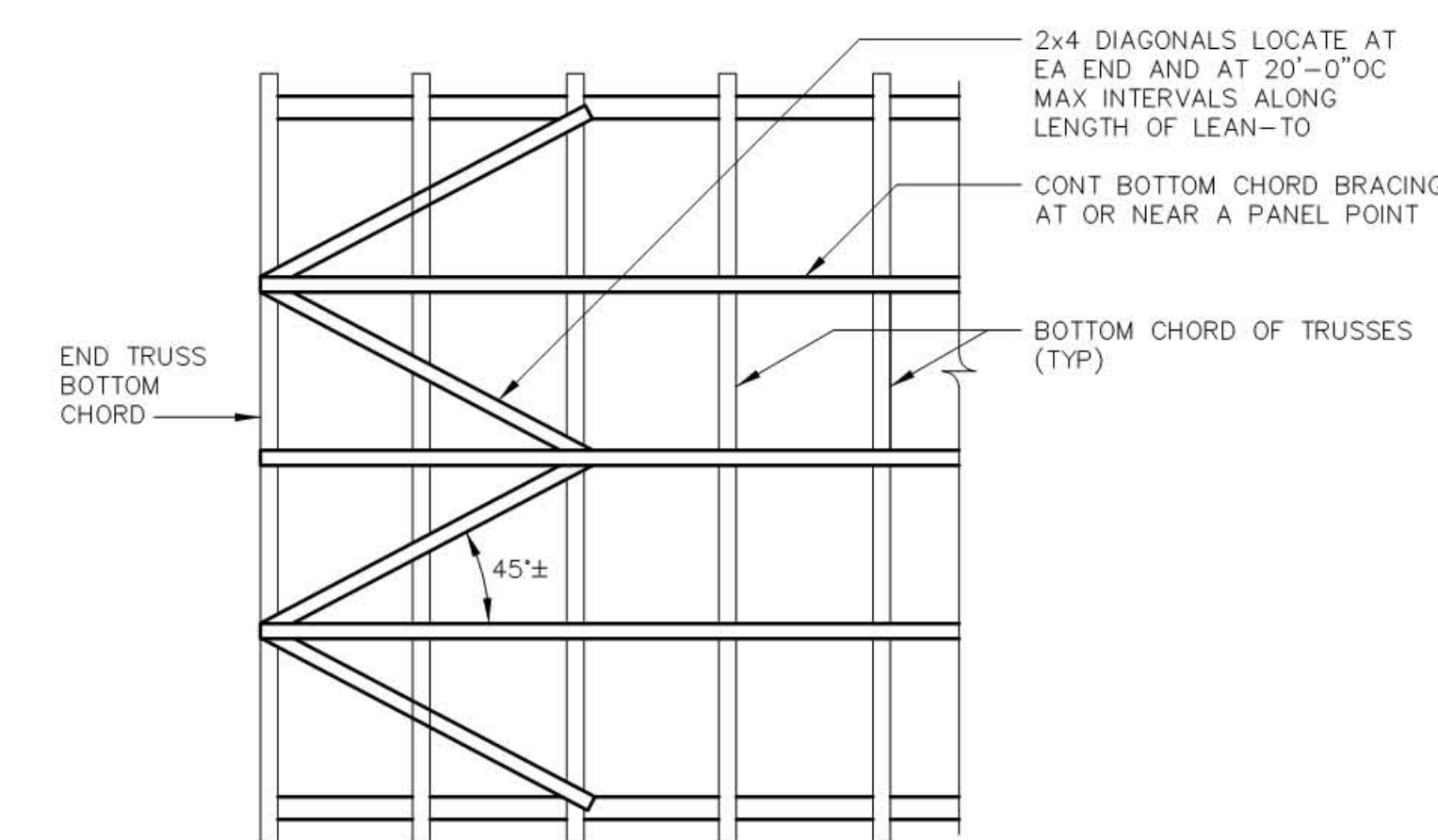
3 FLASHING DETAIL
S-104 SCALE: 1" = 1'-0"



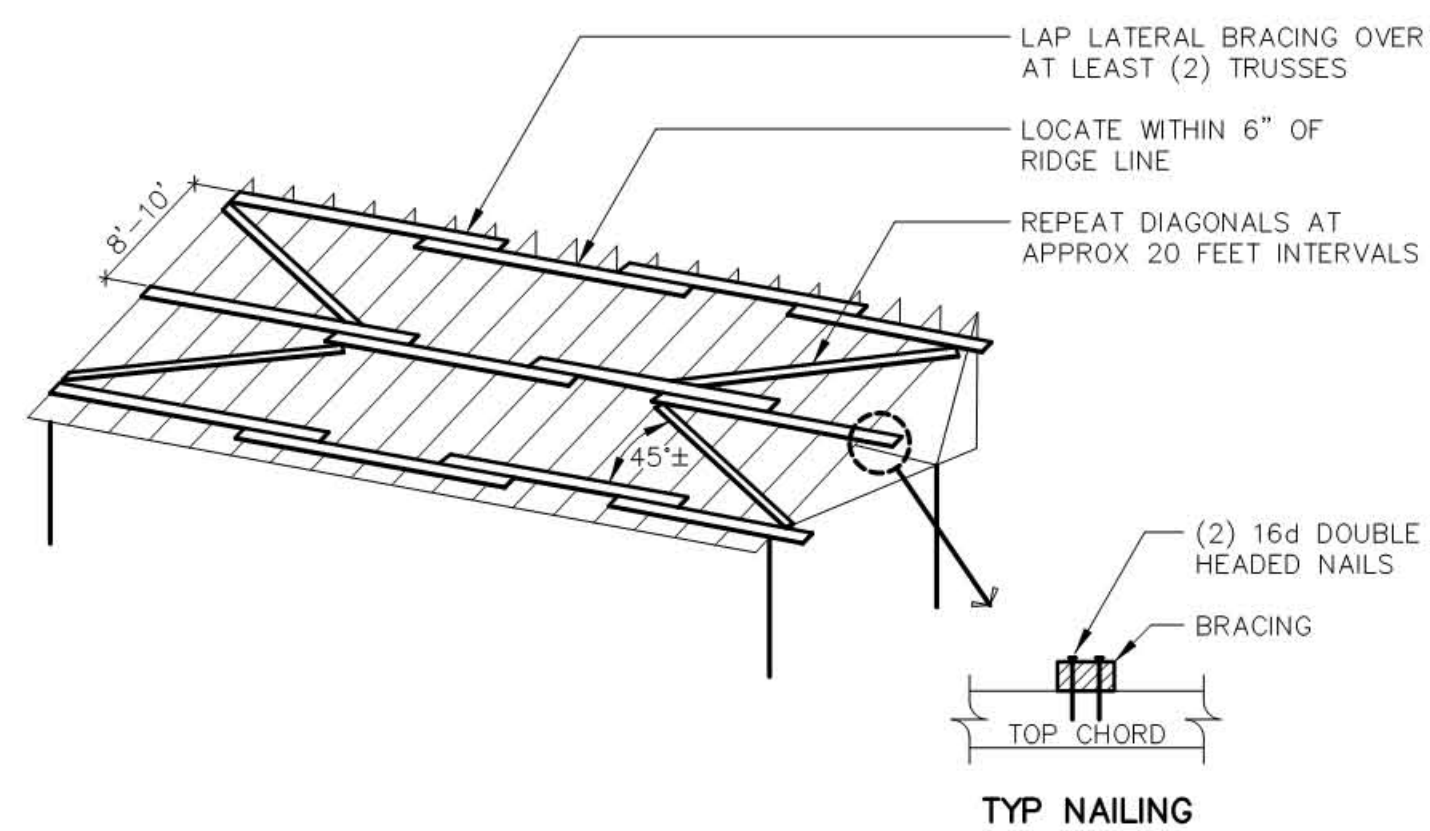
4 FLASHING DETAIL
S-104 SCALE: 1" = 1'-0"



5 TRUSS CROSS BRACING DETAIL
S-104 NOT TO SCALE

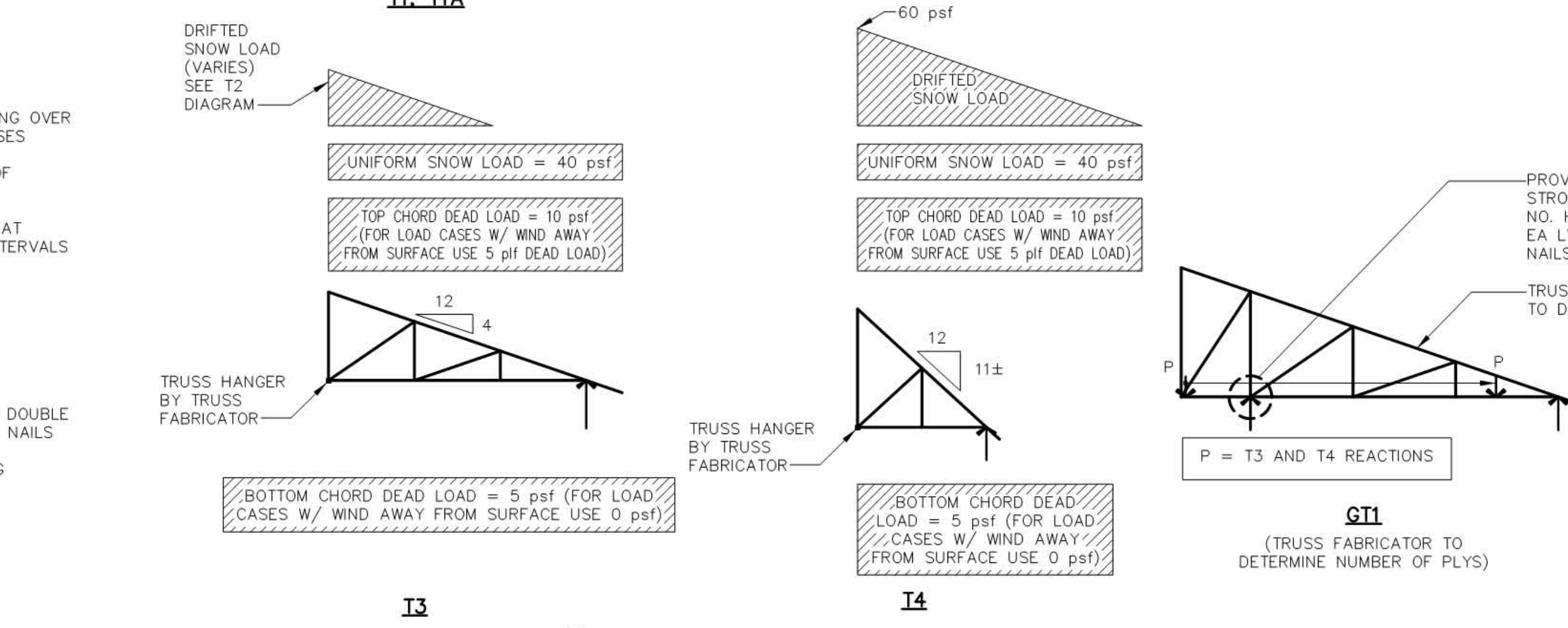
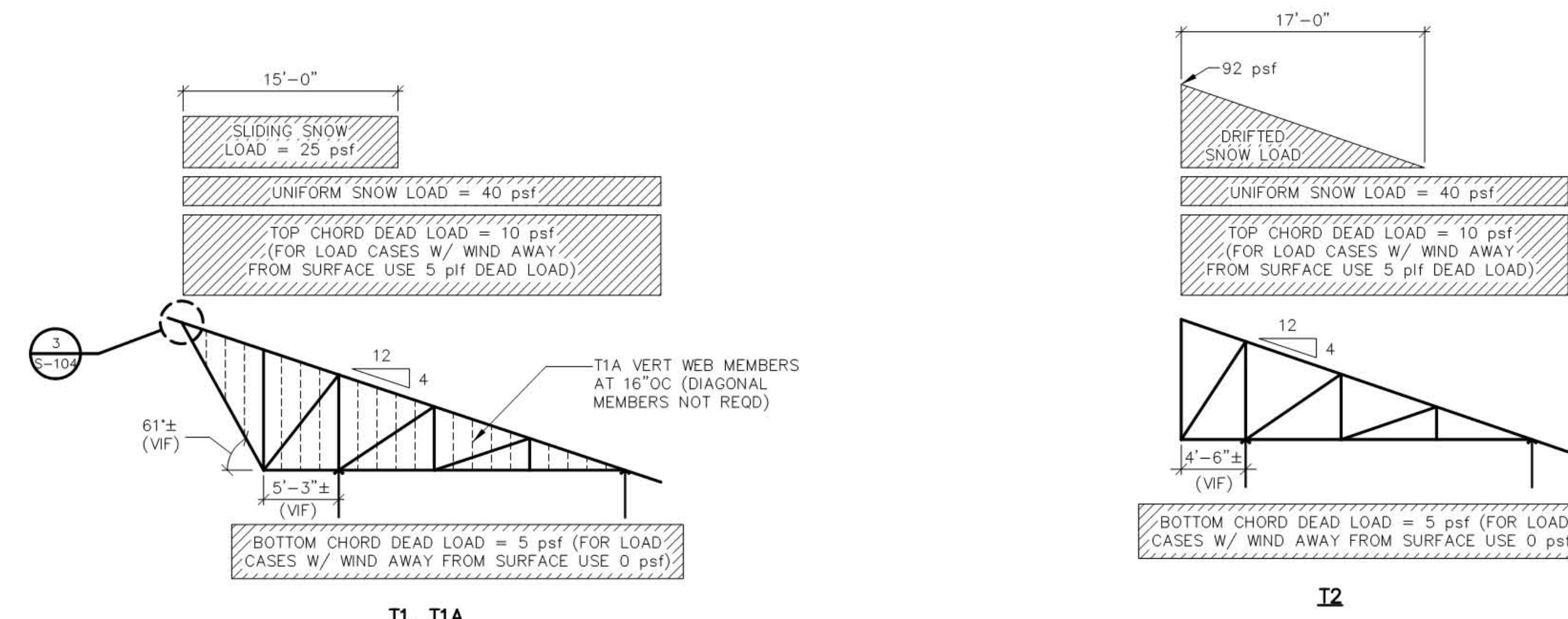


6 TRUSS BOTTOM CHORD BRACING DETAIL
S-104 NOT TO SCALE



7 TEMPORARY TOP CHORD BRACING
S-104 NOT TO SCALE

NOTES:
1. CONTRACTOR'S OPTION TO INSTALL BRACING ON UNDERSIDE OF TOP CHORD, ALL BRACING 2x4.
2. BRACING CAN BE REMOVED AS PLYWOOD IS BEING INSTALLED.



8 ROOF TRUSS SCHEMATIC LOAD DIAGRAMS
S-104 NOT TO SCALE

NOTES:
1. SEE PLAN FOR TRUSS LAYOUT AND SPACING.
2. TRUSSES SHALL BE DESIGNED FOR SEPARATE LOAD CASES OF DEAD LOAD PLUS EACH CASE OF SNOW LOAD. TRUSS DESIGN SHALL ALSO INCLUDE WIND LOAD CASES. FOR DESIGN WIND LOAD, SEE WIND LOAD DATA FOR COMPONENTS AND CLADDING ON S001.
3. SEE TRUSS NOTES AND SPECIFICATION SECTION 061753 FOR ADDITIONAL INFORMATION.



Serving New York
ANDREW M. CUOMO
Governor
ROANN M. DESTITO
Commissioner

CONSULTANT
RYAN-BIGGS ASSOCIATES, P.C.
257 Ushers Road
Clifton Park, NY 12065
www.ryanbiggs.com

WARNING:
THE ALTERATION OF THIS MATERIAL IN ANY WAY, UNLESS DONE UNDER THE DIRECTION OF A COMPARABLE PROFESSIONAL, I.E. ARCHITECT FOR AN ARCHITECT, ENGINEER FOR AN ENGINEER OR LANDSCAPE ARCHITECT FOR A LANDSCAPE ARCHITECT, IS A VIOLATION OF THE NEW YORK STATE EDUCATION LAW AND/OR REGULATIONS AND IS A CLASS 'A' MISDEMEANOR.



CONTRACT:
CONSTRUCTION
TITLE:
CONSTRUCT ADDITION,
SALT STORAGE BUILDING
BUILDING NO. XXX
LOCATION:
MAINTENANCE HEADQUARTERS
DOT REGION 7, ST. LAWRENCE
7280 ROUTE 11, POTSDAM, N.Y. 13676
CLIENT:
DEPARTMENT OF TRANSPORTATION

MARK	DATE	DESCRIPTION
PROJECT NUMBER:	44648 - C	
DESIGNED BY:	JTH	
DRAWN BY:	SJW	
FIELD CHECK:		
APPROVED:		
SHEET TITLE:	SECTIONS AND DETAILS	
DRAWING NUMBER:	S-104	
SHEET	7	OF 7