



ADDENDUM NO. 2 TO PROJECT NO. 44867

**CONSTRUCTION, HVAC, PLUMBING AND ELECTRICAL WORK
ADDITION TO DEMENTIA UNIT, MONTROSE VETERANS HOME
2090 ALBANY POST ROAD
MONTROSE, NY 10548**

December 23, 2013

NOTE: This Addendum forms a part of the Contract Documents. Insert it in the Project Manual. Acknowledge receipt of this Addendum in the space provided on the Bid Form.

BIDDING REQUIREMENTS:

HVAC WORK CONTRACT:

1. Document 004313 FORM OF BID BOND – BID SECURITY; The Project Manual contains two (2) versions of this document that references insured amounts of \$7,200 and \$11,000 respectfully. Remove and discard the version of this document that includes the amount of \$7,200. **\$11,000.00 is correct.**

SPECIFICATIONS:

CONSTRUCTION WORK CONTRACT:

- 2 015213 STATE FIELD OFFICE; Paragraph 1.04 Quality Assurance; Delete sub-paragraph 'C' from the requirements of this section.
- 3 SECTION 113300 RETRACTABLE STAIRS; Add the accompanying document (pages 113300-2 through 113300-2) to the Project Manual.

ELECTRICAL WORK CONTRACT:

4. SECTION 262815 CIRCUIT BREAKERS FOR EXISTIN PANELBOARDS: Add the accompanying section (page 262815 – 1) to the Project Manual.

CONTRUCTION WORK DRAWINGS:

- 4 Drawing No. A-100;
 - a. Add the following note to this drawing:

GENERAL NOTES:

1. Apply spray on fireproofing to the structural steel columns and to the structural steel members at the mechanical mezzanine floor. Refer to Structural Drawings.

2. At Mechanical Room 01 provide 3- ½ ” metal stud wall with ½” gypsum wall board on interior side, tape and painted.
3. At Toilet Rooms 03 & 04 provide 3-5/8" metal stud walls with 5/8" GWB both sides and 3" acoustic batt insulation.
4. At chase wall provide 6" metal studs with 5/8” GWB.
5. Provide handrail to match existing 2’x 6” nominal wood handrail found throughout the existing building.

5 Addendum Drawing:

- a. Drawing No. 14 noted “RFI 14 EXPANSION JT and dated 12/06/2023” accompanies this Addendum and forms part of the Contract Documents.

HVAC WORK DRAWINGS:

6 Revised Drawing:

- a. Drawing No. M-101, noted “ADDENDUM DRAWING 12/06/2013” accompany this Addendum and supersede the same numbered originally issued drawings.

ELECTRICAL WORK DRAWINGS:

7 Revised Drawings:

- a. Drawings Nos. E-2 and E-3, both noted “ADDENDUM 12/20/2013” accompany this Addendum and supersede the same numbered originally issued drawings.

END OF ADDENDUM

James Dirolf, P.E.
Director of Design

SECTION 11 33 00

RETRACTABLE STAIRS

PART 1 GENERAL

1.1 SECTION INCLUDES

- A. Manual disappearing stairways.

1.2 REFERENCES

- A. ANSI A14.9: Safety Requirements for Ceiling Mounted Disappearing Climbing Systems.

1.3 SUBMITTALS

- A. Submit under provisions of Section 013300.
- B. Manufacturer's data sheets on each product to be used, including:
 - 1. Preparation instructions and recommendations.
 - 2. Storage and handling requirements and recommendations.
 - 3. Installation methods.
- C. Shop Drawings for Stairs:
 - 1. Plan and section of stair installation.
 - 2. Indicate rough opening dimensions for ceiling and/or roof openings.

1.4 DELIVERY, STORAGE, AND HANDLING

- A. Store stairway until installation inside under cover in manufacturer's unopened packaging. If stored outside, under a tarp or suitable cover.

1.5 WARRANTY

- A. Limited Warranty: One year against defective material and workmanship, covering parts only. Defective parts, as deemed by the manufacturer, will be replaced at no charge, freight excluded, upon inspection at manufacturer's plant.

PART 2 PRODUCTS

2.1 MANUFACTURERS

- A. Acceptable Manufacturer: Precision Ladders, LLC, P. O. Box 2279; Morristown, TN 37816-2279; Tel: 423-586-2265; Fax: 423-586-2091; www.PrecisionLadders.com
- B. Requests for substitutions will be considered in accordance with provisions of Section 013300.

2.2 MANUAL DISAPPEARING STAIRWAY.

- A. Manual Disappearing Stairway.
 - 1. Standard Model: Super Simplex Disappearing Stairway as manufactured by Precision Ladders LLC.
- B. Performance Standard: Unit shall comply with ANSI A14.9, Commercial Type, for rough openings between 25-1/2 inches to 39 inches. Residential Type for rough openings between 21 1/2" and 25". Stairway capacity shall be rated at 500 lbs.
- C. Accessories:
 - 1. Steel pole to aid opening and closing stairways.
 - 2. Stairs for ceiling heights 9' -10" – 12' -0" shall be equipped with a patented Precision Fold Assist to aid in folding and unfolding of sections. Stairs for ceiling heights 12' 1" – 13'6" shall be equipped with 2 Fold Assists. Precision Fold-Assist is optional on stairways for ceiling heights of 9' 9" and below.
- D. Components:

1. Ceiling Opening
 - a. Ceiling height of 9' 9" or less requires an opening of 30" x 54"
 - b. Ceiling heights from 9' 10" – 12' 0" require opening of 30" x 64"
 - c. Ceiling heights from 12' 1" – 13' 6" require opening of 22 ½" x 72"
2. Stairway Stringer: 6005-T5 Extruded aluminum channel 5" x 1" x 1/8"; tri-fold design; steel blade type hinges; adjustable feet with plastic Mar-guard. Pitch shall be 63°.
3. Stairway Tread: 6005-T5 extruded aluminum channel 5 3/16 inches by 1 1/4 inches by 1/8 inch. Depth is 5 3/16 inches. Deeply serrated top surface. Riser Height: 9-1/2 inches. Clear Tread Width for Standard Width: 19-1/2 inches.
4. Railing: Aluminum bar handrail riveted to stringers, upper section only.
5. Frame:
 - a. If ceiling to floor (or roof deck) above is 12" or less, frame shall be 1/8" steel formed channel, 6" deep.
 - b. When ceiling to floor (or roof deck) above is greater than 12", the frame shall be 1/8" steel, 63° (with built-in steps) on the hinge end, 90° on the other end, custom depth to fill distance from ceiling to floor above. This custom frame will require a longer opening in the floor above than is required at the ceiling level.
6. Door Panel
 - a. Standard (non-fire rated) door shall be constructed of 1/8 inch (3 mm) aluminum sheet attached to stairway frame with a steel piano hinge. Door overlaps bottom flange of frame. Eye bolt accommodates pole for opening and closing door.
 - b. On fire-rated models, the door panel shall be constructed of 20 gauge steel and have a 2 hour fire rating for use in fire-rated ceiling assemblies as issued by Warnock-Hersey or other appropriate independent testing/licensing agency.
7. Hardware:
 - a. Steel blade type hinge connecting stringer sections. Zinc plated and chromate sealed.
 - b. Steel operating arms, both sides. Zinc plated and chromate sealed.
 - c. Double acting steel springs and cable, both sides.
 - d. Rivets rated at 1100 lb (499 kg) shear strength each.
 - e. Steel section alignment clips at stringer section joints.
 - f. Molded rubber guards at corners of aluminum door panel.
8. Finishes: Mill finish on aluminum stairway components. Prime coat on frame.

2.3 FABRICATION

- A. Completely fabricate ladder ready for installation before shipment to the site.

PART 3 EXECUTION

3.1 EXAMINATION

- A. Do not begin installation until rough opening and structural support have been properly prepared.
- B. If substrate preparation is the responsibility of another installer, notify Architect of unsatisfactory preparation before proceeding.
- C. Examine materials upon arrival at site. Notify the carrier and manufacturer of any damage.

3.2 INSTALLATION

- A. Install in accordance with manufacturer's instructions.

3.3 PROTECTION

- A. Protect installed products until completion of project.
- B. Touch-up, repair or replace damaged products before Substantial Completion.

END OF SECTION

SECTION 262815

CIRCUIT BREAKERS FOR EXISTING PANELBOARDS

PART 1 GENERAL

1.01 SUBMITTALS

- A. Not required.

PART 2 PRODUCTS

2.01 CIRCUIT BREAKERS

- A. Similar to existing circuit breakers.
- B. Compatible with existing panelboard.
- C. Number of poles and ampere trip rating as indicated on drawings.
- D. Complete with accessories required for installation.

PART 3 EXECUTION

3.01 INSTALLATION

- A. Install new circuit breakers in existing panelboards where indicated.
- B. Add new circuits equally across phases to prevent overloading any phase in the panelboard. After new and existing circuits are energized, take current reading on panelboard feeder during a heavy usage time period. If phases are substantially unbalanced, rearrange both new and existing circuits in panelboard to equally distribute load between all phases, and provide new typewritten directory indicating equipment controlled by each circuit breaker.

END OF SECTION

SECTION 11 33 00

RETRACTABLE STAIRS

PART 1 GENERAL

1.1 SECTION INCLUDES

- A. Manual disappearing stairways.

1.2 REFERENCES

- A. ANSI A14.9: Safety Requirements for Ceiling Mounted Disappearing Climbing Systems.

1.3 SUBMITTALS

- A. Submit under provisions of Section 013300.
- B. Manufacturer's data sheets on each product to be used, including:
 - 1. Preparation instructions and recommendations.
 - 2. Storage and handling requirements and recommendations.
 - 3. Installation methods.
- C. Shop Drawings for Stairs:
 - 1. Plan and section of stair installation.
 - 2. Indicate rough opening dimensions for ceiling and/or roof openings.

1.4 DELIVERY, STORAGE, AND HANDLING

- A. Store stairway until installation inside under cover in manufacturer's unopened packaging. If stored outside, under a tarp or suitable cover.

1.5 WARRANTY

- A. Limited Warranty: One year against defective material and workmanship, covering parts only. Defective parts, as deemed by the manufacturer, will be replaced at no charge, freight excluded, upon inspection at manufacturer's plant.

PART 2 PRODUCTS

2.1 MANUFACTURERS

- A. Acceptable Manufacturer: Precision Ladders, LLC, P. O. Box 2279; Morristown, TN 37816-2279; Tel: 423-586-2265; Fax: 423-586-2091; www.PrecisionLadders.com
- B. Requests for substitutions will be considered in accordance with provisions of Section 013300.

2.2 MANUAL DISAPPEARING STAIRWAY.

- A. Manual Disappearing Stairway.
 - 1. Standard Model: Super Simplex Disappearing Stairway as manufactured by Precision Ladders LLC.
- B. Performance Standard: Unit shall comply with ANSI A14.9, Commercial Type, for rough openings between 25-1/2 inches to 39 inches. Residential Type for rough openings between 21 1/2" and 25". Stairway capacity shall be rated at 500 lbs.
- C. Accessories:
 - 1. Steel pole to aid opening and closing stairways.
 - 2. Stairs for ceiling heights 9' -10" – 12' -0" shall be equipped with a patented Precision Fold Assist to aid in folding and unfolding of sections. Stairs for ceiling heights 12' 1" – 13'6" shall be equipped with 2 Fold Assists. Precision Fold-Assist is optional on stairways for ceiling heights of 9' 9" and below.
- D. Components:

1. Ceiling Opening
 - a. Ceiling height of 9' 9" or less requires an opening of 30" x 54"
 - b. Ceiling heights from 9' 10" – 12' 0" require opening of 30" x 64"
 - c. Ceiling heights from 12' 1" – 13' 6" require opening of 22 ½" x 72"
2. Stairway Stringer: 6005-T5 Extruded aluminum channel 5" x 1" x 1/8"; tri-fold design; steel blade type hinges; adjustable feet with plastic Mar-guard. Pitch shall be 63°.
3. Stairway Tread: 6005-T5 extruded aluminum channel 5 3/16 inches by 1 1/4 inches by 1/8 inch. Depth is 5 3/16 inches. Deeply serrated top surface. Riser Height: 9-1/2 inches. Clear Tread Width for Standard Width: 19-1/2 inches.
4. Railing: Aluminum bar handrail riveted to stringers, upper section only.
5. Frame:
 - a. If ceiling to floor (or roof deck) above is 12" or less, frame shall be 1/8" steel formed channel, 6" deep.
 - b. When ceiling to floor (or roof deck) above is greater than 12", the frame shall be 1/8" steel, 63° (with built-in steps) on the hinge end, 90° on the other end, custom depth to fill distance from ceiling to floor above. This custom frame will require a longer opening in the floor above than is required at the ceiling level.
6. Door Panel
 - a. Standard (non-fire rated) door shall be constructed of 1/8 inch (3 mm) aluminum sheet attached to stairway frame with a steel piano hinge. Door overlaps bottom flange of frame. Eye bolt accommodates pole for opening and closing door.
 - b. On fire-rated models, the door panel shall be constructed of 20 gauge steel and have a 2 hour fire rating for use in fire-rated ceiling assemblies as issued by Warnock-Hersey or other appropriate independent testing/licensing agency.
7. Hardware:
 - a. Steel blade type hinge connecting stringer sections. Zinc plated and chromate sealed.
 - b. Steel operating arms, both sides. Zinc plated and chromate sealed.
 - c. Double acting steel springs and cable, both sides.
 - d. Rivets rated at 1100 lb (499 kg) shear strength each.
 - e. Steel section alignment clips at stringer section joints.
 - f. Molded rubber guards at corners of aluminum door panel.
8. Finishes: Mill finish on aluminum stairway components. Prime coat on frame.

2.3 FABRICATION

- A. Completely fabricate ladder ready for installation before shipment to the site.

PART 3 EXECUTION

3.1 EXAMINATION

- A. Do not begin installation until rough opening and structural support have been properly prepared.
- B. If substrate preparation is the responsibility of another installer, notify Architect of unsatisfactory preparation before proceeding.
- C. Examine materials upon arrival at site. Notify the carrier and manufacturer of any damage.

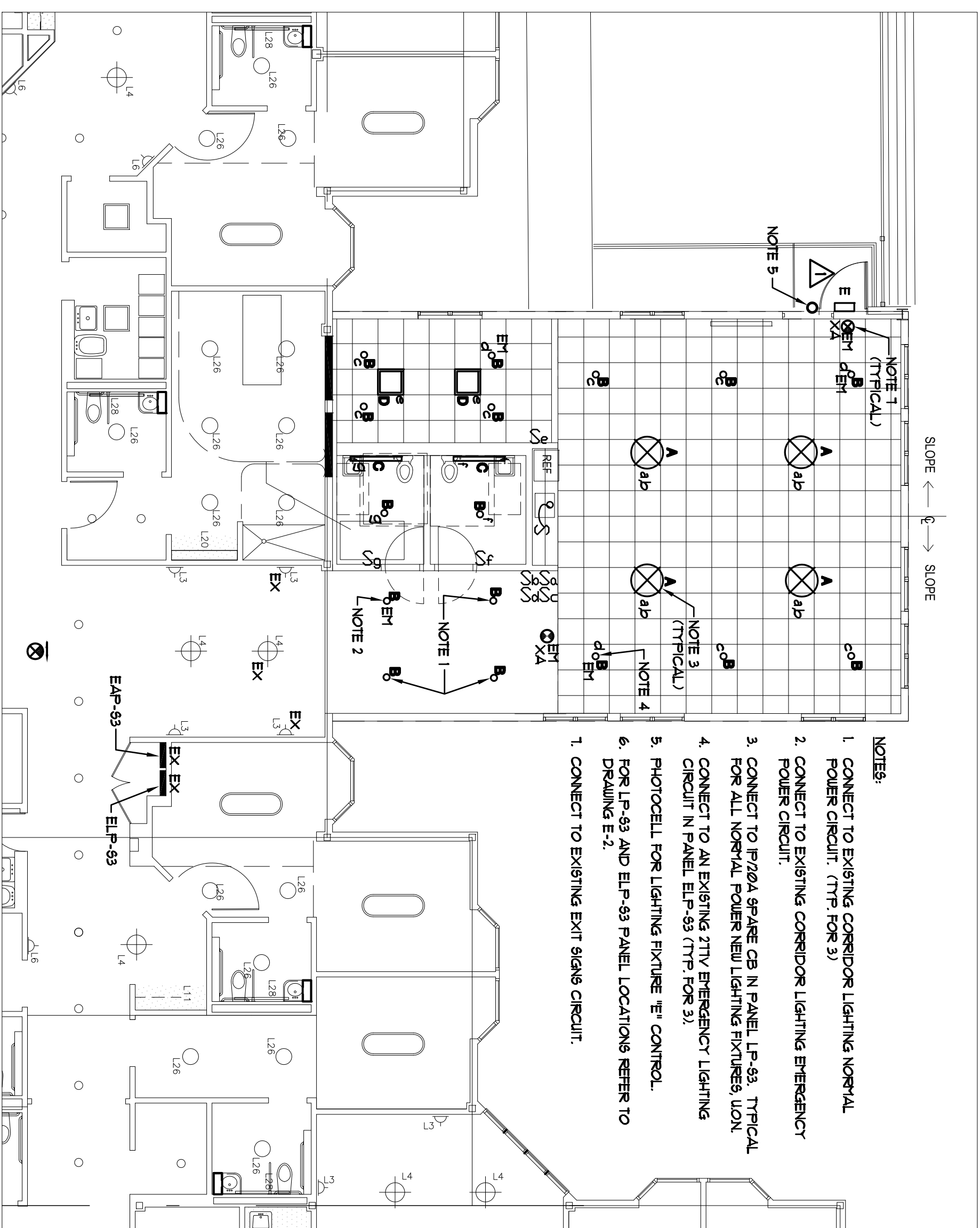
3.2 INSTALLATION

- A. Install in accordance with manufacturer's instructions.

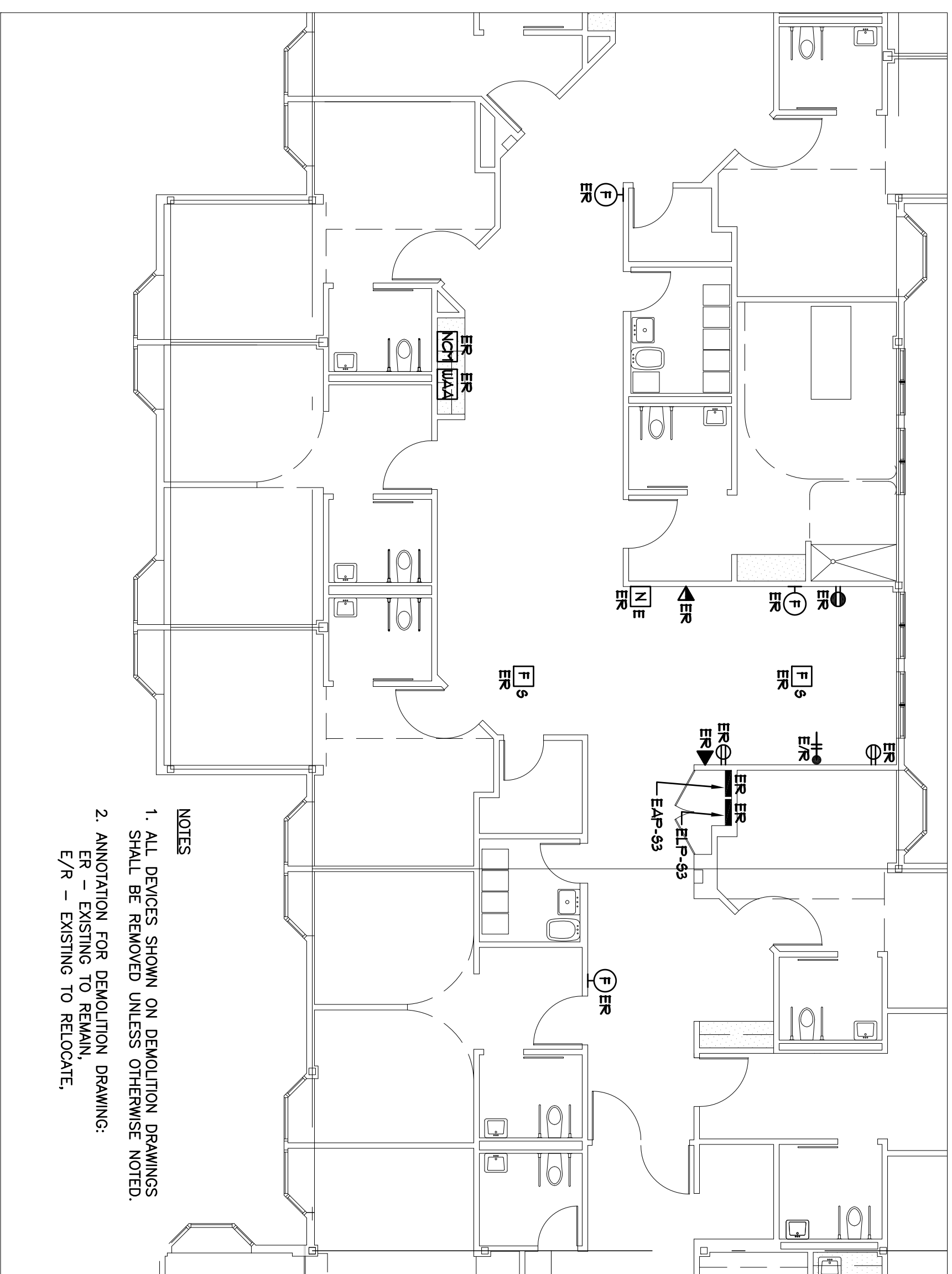
3.3 PROTECTION

- A. Protect installed products until completion of project.
- B. Touch-up, repair or replace damaged products before Substantial Completion.

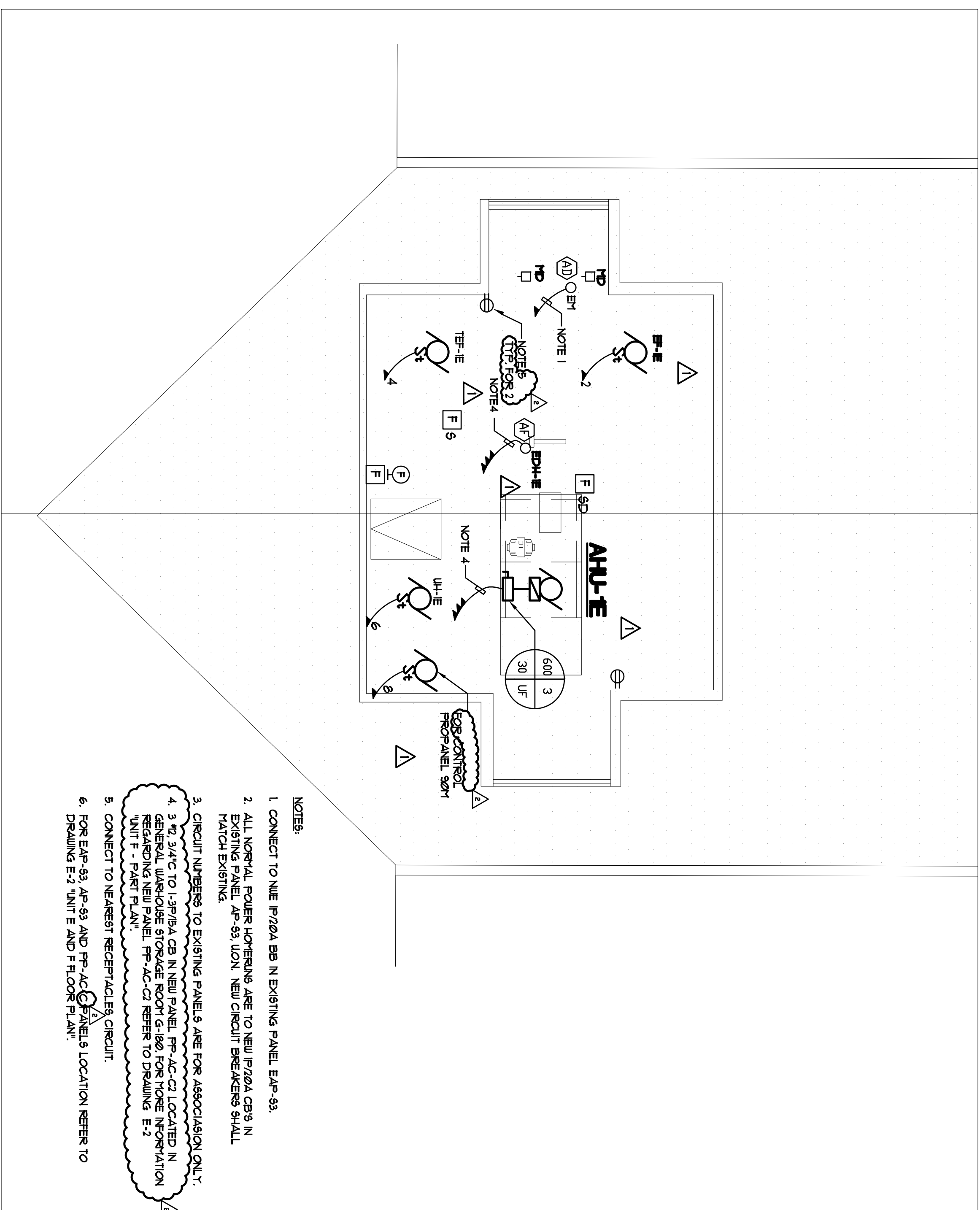
END OF SECTION



LIGHTING PLAN
 SCALE: 1/8" = 1'-0"

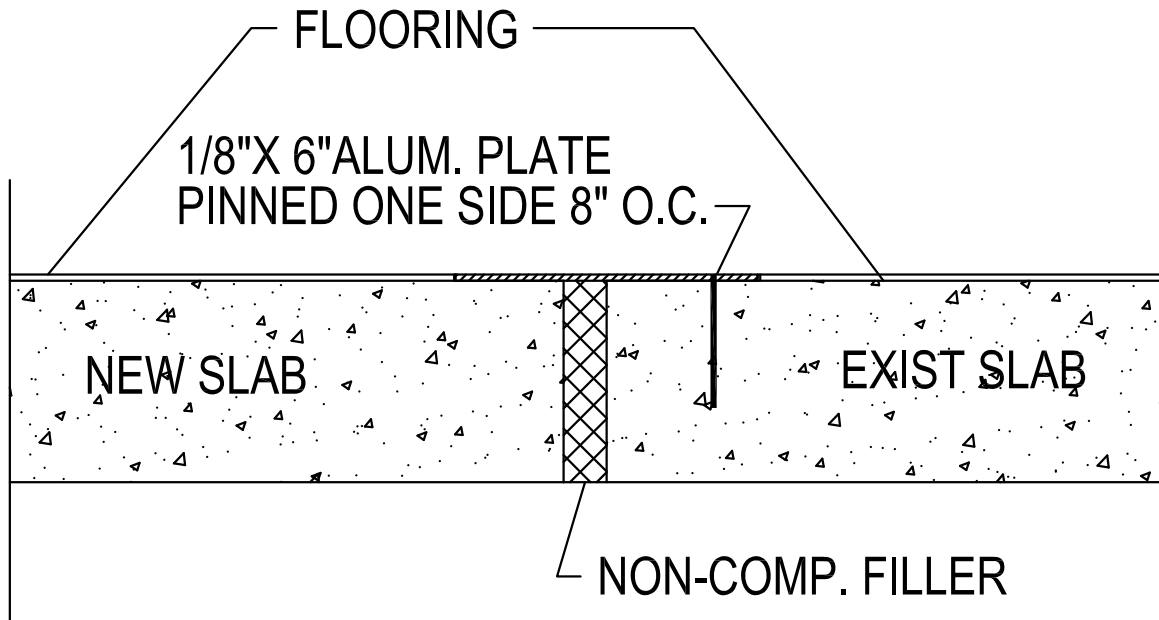


DEMOLITION PLAN
 SCALE: 1/8" = 1'-0"

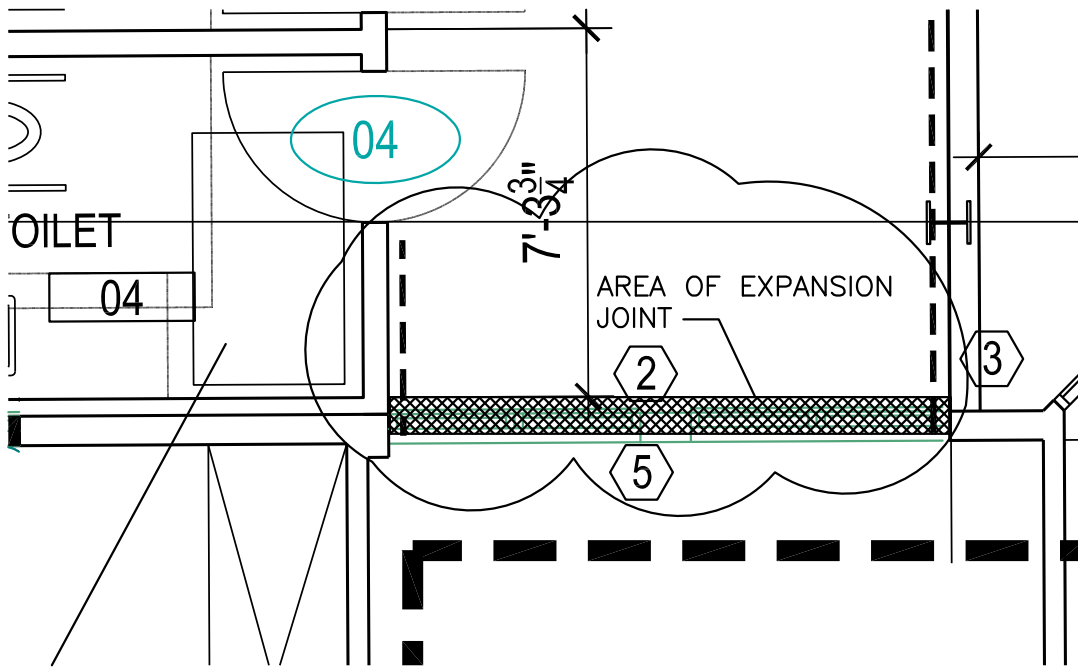


MECHANICAL ROOM PLAN
 SCALE: 1/4" = 1'-0"

 NY'S OFFICE OF GENERAL SERVICES Serving New York ANDREW M. CUOMO Governor	ROANNE M. DESTITO Commissioner, Design and Construction CONSULTANT	 PERKINS EASTMAN 115 FIFTH AVENUE NEW YORK, NY 10003 F: 212.583.7200	KALLEN & LEMELSON consulting engineers, llp 19018 (212) 644-9888 FAX (212) 644-3232 K&L Proj. No. 5771	WARNING: THE DESIGN OF THIS MATERIAL IS NOT AN OFFICIAL DESIGN OR SPECIFICATION OF THE STATE OF NEW YORK. THE DESIGNER, ENGINEER, ARCHITECT, OR LANDSCAPE ARCHITECT IS A LICENSED PROFESSIONAL UNDER THE PROFESSIONAL ENGINEER OR ARCHITECT ACT, OR THE LANDSCAPE ARCHITECT ACT, AND IS A CLASS 'A' MISDEMEANOR.
CONTRACT: ELECTRICAL TITLE: PROVIDE ADDITION TO DEMENTIA UNIT LOCATION: MONROSE VETERANS HOME 2090 ALBANY POST ROAD MONROSE, NY 10548 CLIENT: DEPARTMENT OF HEALTH				
MARK: DATE: DESCRIPTION PROJECT NUMBER: 44867 DESIGNED BY: KALLEN & LEMELSON DRAWN BY: R.C. FIELD CHECK: APPROVED: SHEET TITLE: LIGHTING, ATTIC, MECHANICAL ROOM AND DEMOLITION PART PLANS DRAWING NUMBER: E-3 SHEET: 3 OF 4				



2 EXPANSION JOINT
 SCALE: 3" = 1'-0"



1 PARTIAL FLOOR PLAN
 SCALE: 1/4" = 1'-0"

Perkins Eastman

1100 LIBERTY AVENUE
 PITTSBURGH, PA 15222
 T. 412.456.0900
 F. 412.456.0906

PROJECT: ADDITION.TO.DEMENTIA.UNIT

PE NO: 44867

DRAWING TITLE: RFI.14.EXPANSION.JT.

SCALE: NTS

DATE: 12/06/13

