



**DESIGN AND CONSTRUCTION GROUP
THE GOVERNOR NELSON A. ROCKEFELLER
EMPIRE STATE PLAZA
ALBANY, NY 12242**

ADDENDUM NO. 3 TO PROJECT NO. 45410

**CONSTRUCTION, HVAC, PLUMBING AND ELECTRICAL WORK
PROVIDE CLASSROOMS & CELL ALTERATIONS
S-BLOCK – BUILDING NO. 29
LAKEVIEW CORRECTIONAL FACILITY
LAKE AVENUE
BROCTON, NEW YORK**

June 26, 2017

<p>NOTE: This Addendum forms a part of the Contract Documents. Insert it in the Project Manual. Acknowledge receipt of this Addendum in the space provided on the Bid Form.</p>
--

SPECIFICATIONS GROUP

HVAC WORK

1. 230924 MODIFICATIONS TO DIRECT DIGITAL BUILDING CONTROL SYSTEM – Page 230924-22; change subparagraph 6) to read:
“6) Summer Mode Unoccupied: HRU-2 shall de-energize, AHU-B supply and exhaust dampers shall close, and AHU-B shall operate in full RA mode until a start-up schedule re-energizes HRU-2.”
2. 230924 MODIFICATIONS TO DIRECT DIGITAL BUILDING CONTROL SYSTEM – Page 230924-25; subparagraph 3.i.1), change last sentence to read:
“1) See Article D, Air Flow Totalizing & Air Flow Tracking, below.”
3. 230924 MODIFICATIONS TO DIRECT DIGITAL BUILDING CONTROL SYSTEM – Page 230924-25; subparagraph 3.i.2), change last sentence to read:
“2) The unit shall provide $71F \pm 2^{\circ}F$ minimum air temperature with a maximum dewpoint of 57F.”
4. 230924 MODIFICATIONS TO DIRECT DIGITAL BUILDING CONTROL SYSTEM – Page 230924-28; Article C, re-letter Article to read:
“D. Air Flow Totalizing & Air Flow Tracking.”
5. 230924 MODIFICATIONS TO DIRECT DIGITAL BUILDING CONTROL SYSTEM – Page 230924-29; Article D, re-letter Article to read:
“E. *Exhaust Fan EF-G*.”

ADDENDUM NO. 3 TO PROJECT NO. 45410

6. 230924 MODIFICATIONS TO DIRECT DIGITAL BUILDING CONTROL SYSTEM – Page 230924-30; Article D. Fan Coil Units: Delete this Article in its entirety.
7. 230924 MODIFICATIONS TO DIRECT DIGITAL BUILDING CONTROL SYSTEM – Page 230924-31; Article E, change Article to read:
“F. Hot Water Finned Tube”
8. 230924 MODIFICATIONS TO DIRECT DIGITAL BUILDING CONTROL SYSTEM – Page 230924-32; Article F, re-letter Article to read:
“G. Cabinet and Unit Heaters”
9. 230924 MODIFICATIONS TO DIRECT DIGITAL BUILDING CONTROL SYSTEM – Page 230924-33; Article G, re-letter Article to read:
“H. Air Duct Smoke Detectors”
10. 230924 MODIFICATIONS TO DIRECT DIGITAL BUILDING CONTROL SYSTEM – Page 230924-33; same Article as above, paragraph 2: After “DDC system”, insert, “or the Fire Alarm Control Panel.”

ELECTRIC WORK

11. 271301- TELECOMMUNICATION CABLE AND ACCESSORIES: Add this attached Section (pages 271301-1 through 271301-4) to the Project Manual.

NO CONSTRUCTION OR PLUMBING WORK ADDENDA.

DRAWINGS

HVAC WORK DRAWINGS

12. Revised Drawing:
 - a. Drawing M-100, noted “ADDENDUM NO. 3” and dated, “6/23/17” accompanies this Addendum and supersedes the same numbered originally issued drawing and forms part of the Contract Documents.
13. Revised Drawing:
 - a. Drawing M-102, noted “ADDENDUM NO. 3” and dated, “6/23/17” accompanies this Addendum and supersedes the same numbered originally issued drawing and forms part of the Contract Documents.
14. Drawing No. M-001, HVAC GENERAL NOTES:
 - a. Change General Note 12 to read:

“12. Contractor is required to participate in the commissioning (Cx) process as specified in Specification Section 019113 and the Appendix. Contractor is required to participate in and facilitate coordinated drawings for coordination meetings as specified and indicated.”
 - b. Add General Note 17:
“17. SEISMIC INFORMATION
>I-3 OCCUPANCY YIELDS A SEISMIC RISK CATEGORY OF III
>SITE CLASS DEFAULT VALUE IS 'D'”

ADDENDUM NO. 3 TO PROJECT NO. 45410

>SITE COEFFICIENTS ARE $F_a = 1.6$ AND $F_v = 2.4$
>DESIGN SPECTRAL RESPONSE ACCEL. $S_d = 0.157g$ & $S_{d1} = 0.082g$
>THE SEISMIC DESIGN CATEGORY IS 'B'; THE MECHANICAL SYSTEMS AND THEIR OTHER NON-STRUCTURAL COMPONENTS LOCATED IN OR ON THIS BUILDING ARE **EXEMPT** FROM THE REQUIREMENTS OF SEISMIC RESTRAINTS."

15. Drawing No. M-101, GENERAL NOTES:
 - a. Add General Note 2:

"2. GROUND BELOW LOUVER AC02 IS ACCESSIBLE AND FLAT FOR LIFTS OR LADDERS; GROUND BELOW LOUVER AC01 IS ACCESSIBLE AND FLAT AND IS ADJACENT TO A LARGE PAVED PARKING LOT."
 - b. Add to the 14" x 12" duct note: After "REMOVE" add, "APPROX. 40 FEET"
16. Drawing No. M-103:
 - a. Add General Note 4:

"4. PROVIDE MOTORIZED 2-POSITION DAMPERS ON HRU-2 SA AND RA DUCTWORK IF NO DAMPERS ARE PROVIDED WITH THE UNIT. PROVIDE DDC CONTROL OF DAMPERS VIA AHU-B, AS SPECIFIED, OR HRU-2, AS APPROVED."
 - b. Add to the note at bottom of plan near (e) HRU-1: "PROVIDE VDS IN DUCT DROPS TO 2ND FLR."
17. Drawing No. M-104, GENERAL NOTES; Add General Note 2:

"2. GROUND BELOW LOUVER AC02 IS ACCESSIBLE AND FLAT FOR LIFTS OR LADDERS; GROUND BELOW LOUVER AC01 IS ACCESSIBLE AND FLAT AND IS ADJACENT TO A LARGE PAVED PARKING LOT.

ELECTRICAL WORK DRAWINGS

18. Drawing E-001, GENERAL NOTES; general note B: Replace general note B to read:

"B. Contractor is required to participate in the commissioning (Cx) process as specified in Specification Section 019113 and the Appendix. Contractor is required to participate in coordination meetings as specified and indicated."
19. Drawing E-110 and E-114: In Classrooms, provide two key switches to perform bi level switching.
20. Drawing E-111, General Note A: Revise phrase "Maintain integrity of existing lighting circuits for reconnection and extension of new receptacle outlets." to "Maintain integrity of existing receptacle circuits for reconnection and extension of new receptacle outlets."
21. Drawing E-113: In Halls 0A03 and 0A17, revise Relocated Smoke Detector symbol to new Smoke Detector symbol. In Equipment Room 1A15, revise Relocated Smoke Detector symbol to new Smoke Detector symbol.
22. Drawing E-114, General Notes: Disconnect and remove existing lighting fixtures, associated conductors and conduits in work areas shown. Disconnect and relocate existing fire alarm initiating devices and existing public address system speakers as shown. Extend system conductors in conduit to relocated devices. Maintain integrity of the existing systems to the extent possible."

ADDENDUM NO. 3 TO PROJECT NO. 45410

23. Drawing E-115, Partial Attic Plan-Power: Revise boxed symbol with “ECB” to boxed symbol with “VFD”.

NO CONSTRUCTION OR PLUMBING WORK DRAWINGS ADDENDA

END OF ADDENDUM

Margaret F. Larkin
Executive Director
Design and Construction

SECTION 271301**TELECOMMUNICATION CABLES AND ACCESSORIES****PART 1 GENERAL****1.01 RELATED WORK SPECIFIED ELSEWHERE**

- A. Interior Raceways, Fittings, and Accessories: Section 260532.

1.02 REFERENCES

- A. EIA/TIA 568B.
- B. EIA/TIA 607.

1.03 SYSTEM DESCRIPTION

- A. Waiver of Submittals: The “Waiver of Certain Submittal Requirements” in Section 013300 does not apply to this Section.
- B. Submittals Package: Submit the shop drawings, point to point wiring diagrams, training submittals, and product data submittals specified below at the same time as a package within 60 days of contract award.
- C. Shop Drawings:
 - 1. Submit scale drawings of the proposed rack layouts.
- D. Point to Point Wiring Diagrams:
 - 1. Submit complete point to point wiring diagrams of the entire system as it is to be installed.
 - a. Point to Point wiring diagrams shall show the following:
 - 1) All components in the system.
 - 2) All cables and conductors between each component.
 - 3) Identify all cables and conductors and show all terminations and splices (identification shall correspond to markers to be installed on each conductor).
- E. Product Data:
 - 1. Catalog sheets, specifications, and installation instructions for all products.
- F. Samples (If requested, when submitting other than what is specified):
 - 1. One 4 foot sample of each type cable proposed for use.
 - 2. Two samples of each connector (splices and terminations) proposed for use.
- G. Quality Control Submittals:
 - 1. Category 3 Cable Installer’s Qualifications Data:
 - a. Certified statement from the Company producing the Category 3

cable saying that the installer(s) are certified by them for installing their cable and that at the conclusion of the installation they will warrant the installation.

2. List of Completed Installations: If brand names other than those specified are proposed for use, furnish the name, address, and telephone number of at least 5 comparable installations that can prove the proposed products have operated satisfactorily for one year. Arrange for the Director's Representative to inspect 2 of these installations.

H. Contract Closeout Submittals:

1. System acceptance test report.
2. Company certified statement of warranty for the category 3 cable.

1.05 DELIVERY, STORAGE AND HANDLING

A. Cable Delivery:

1. No cable over one year old when delivered to the site will be accepted.
2. Keep ends of cables sealed at all times, except when making splices or terminations. Use methods approved by cable manufacturer.
3. Include the following data durably marked on each reel:
 - a. Reel number.
 - b. Facility name and address.
 - c. Contractor's name.
 - d. Project title and number.
 - e. Date of manufacture.
 - f. Manufacturer's name.
 - g. Linear feet.
 - h. Location where cable is to be installed.

- B. Cable Storage: Store where cable will be at temperature recommended by cable manufacturer for optimum workability.

PART 2 PRODUCTS

2.01 CATEGORY CABLE AND ACCESSORIES

A. RS-485 Cable:

1. 4 pair 22 AWG, gel-filled duct cable.

B. Category 3:

1. 4 pair, 24 AWG, Gray PVC Jacketed.

C. Jacks:

1. RJ-25 Jacks (Ivory): Systimax's M1AH-246.

D. Security Face Plates:

1. 10 Gage Steel.

2.02 ACCESSORIES

- A. Cable Management:
 1. Vertical Wire Manager: Panduit's WMPV45EY.
 2. Horizontal Wire Manager: Panduit's WMPH2EY.

2.03 TELEPHONE INTERCONNECTION BOARDS

- A. Plywood Standard; Construction and Industrial Grades: U.S. Dept. of Commerce Product Standard PS-1.
- B. Plywood Species and Type: Any Group 1 species, A-D INT-APA, exterior glue; Plain Sliced face veneer.

2.04 ACCESSORIES

- A. Pulling Compounds: As recommended by cable manufacturer.
- B. Tags: Precision engrave letters and numbers with uniform margins, character size minimum 3/16 inches high.
 1. Phenolic: Two color laminated engraver's stock, 1/16 inch minimum thickness, machine engraved to expose white inner core color.
 2. Aluminum: Standard aluminum alloy plate stock, minimum .032 inches thick, engraved areas enamel filled or background enameled with natural aluminum engraved characters.
- C. Markers:
 1. Premarked self-adhesive: W.H. Brady Co.'s B940, Thomas and Betts Co.'s E-Z code WSL self-laminating, Ideal Industries' Mylar/Cloth wire markers, or Markwick Corp.'s permanent wire markers.
 2. Flexible sleeve markers: Plastic Extruded Parts Inc.'s FS series.
 3. Snap-on markers: Plastic Extruded Parts Inc.'s RS series.

PART 3 EXECUTION

3.01 INSTALLATION

- A. Category 3 specific:
 1. Cat. 3 homeruns from the rooms of each building back to the TIC or TIB's in each building installed under this contract.
 2. Terminate all four pairs of each Cat. 3 cable going to a (TIB) onto 66 type connecting blocks (12 cables per block) with 1 each 89B type bracket per block.
 3. At each phone jack marked on the drawings as "WT" terminate with a Siemen's 630B Wall Jack.
- B. Telephone Interconnection Cabinets: Install at locations indicated on the drawings.
- C. Telephone Interconnection Boards: Install plywood mounting board of size, and at locations indicated on drawings. Paint boards with one coat of primer and 2 coats

of flat black enamel paint.

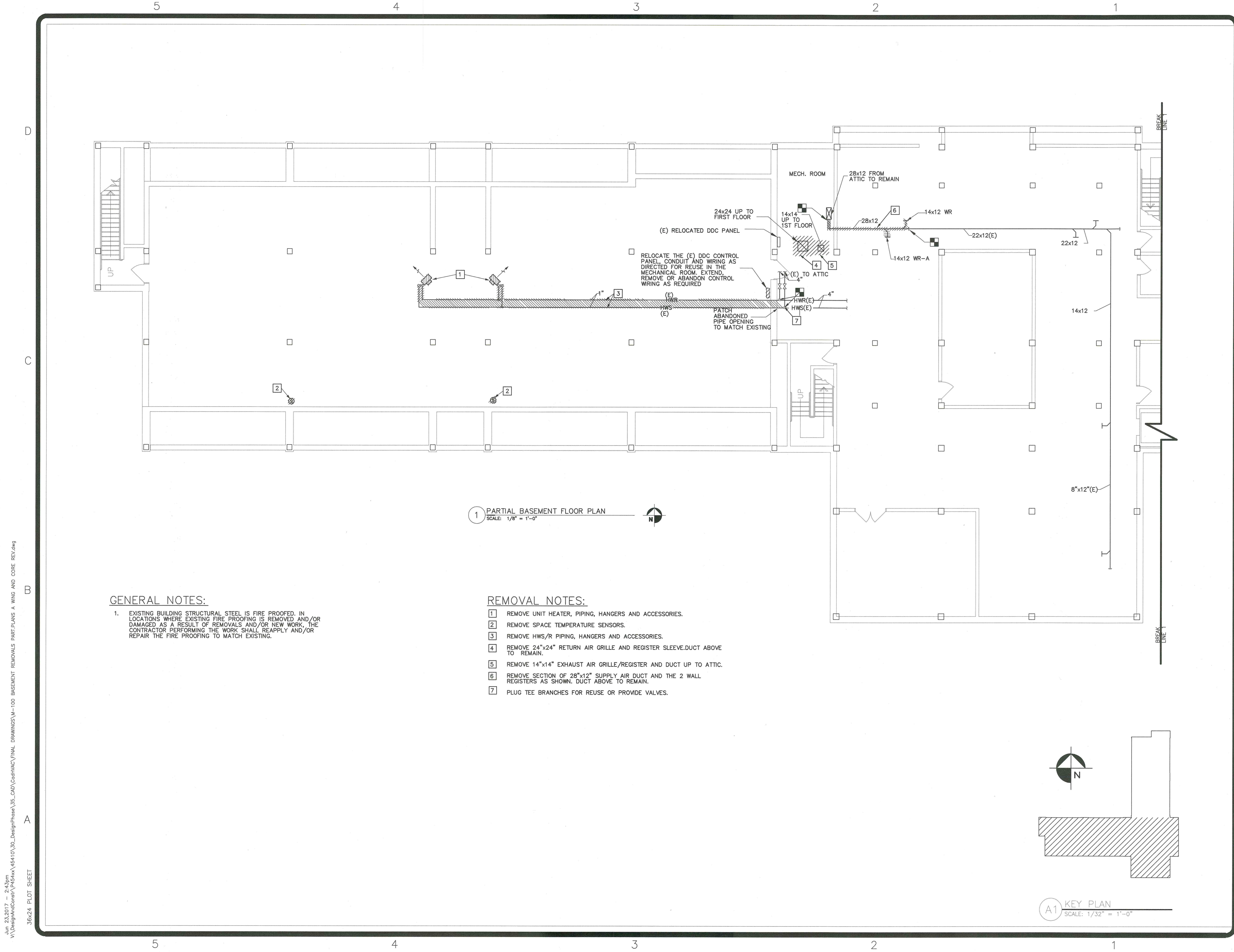
- D All Telephone and data cables in conduit within buildings as follows:
 - 1. 4 pair 24 AWG cable in 3/4" conduit. (Communication Cable)
 - 2. 4 pair 22 AWG, cable in 3/4" conduit. (RS-485)

3.02 FIELD QUALITY CONTROL

- A. Post Installation all communication and RS-485 Cable Test:
 - 1. All cables are to be tested for continuity between and within buildings.
 - 2. Submit written report of test results signed by the Director's Representative.

END OF SECTION

BAH



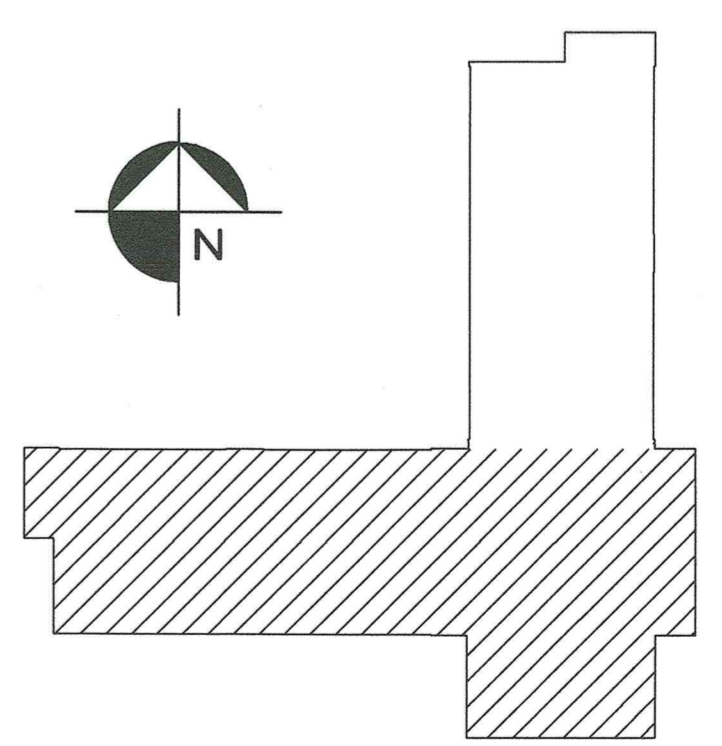
1 PARTIAL BASEMENT FLOOR PLAN
SCALE: 1/8" = 1'-0"

GENERAL NOTES:

- EXISTING BUILDING STRUCTURAL STEEL IS FIRE PROOFED. IN LOCATIONS WHERE EXISTING FIRE PROOFING IS REMOVED AND/OR DAMAGED AS A RESULT OF REMOVALS AND/OR NEW WORK, THE CONTRACTOR PERFORMING THE WORK SHALL REAPPLY AND/OR REPAIR THE FIRE PROOFING TO MATCH EXISTING.

REMOVAL NOTES:

- REMOVE UNIT HEATER, PIPING, HANGERS AND ACCESSORIES.
- REMOVE SPACE TEMPERATURE SENSORS.
- REMOVE HWS/R PIPING, HANGERS AND ACCESSORIES.
- REMOVE 24"x24" RETURN AIR GRILLE AND REGISTER SLEEVE. DUCT ABOVE TO REMAIN.
- REMOVE 14"x14" EXHAUST AIR GRILLE/REGISTER AND DUCT UP TO ATTIC.
- REMOVE SECTION OF 28"x12" SUPPLY AIR DUCT AND THE 2 WALL REGISTERS AS SHOWN. DUCT ABOVE TO REMAIN.
- PLUG TEE BRANCHES FOR REUSE OR PROVIDE VALVES.



A1 KEY PLAN
SCALE: 1/32" = 1'-0"

NEW YORK STATE OF OPPORTUNITY | **Office of General Services**

DESIGN & CONSTRUCTION

CONSULTANT

WARNING:
THE ALTERATION OF THIS MATERIAL IN ANY WAY, UNLESS DONE UNDER THE DIRECTION OF A COMPARABLE PROFESSIONAL, I.E. ARCHITECT FOR AN ARCHITECT, ENGINEER FOR AN ENGINEER OR LANDSCAPE ARCHITECT FOR A LANDSCAPE ARCHITECT, IS A VIOLATION OF THE NEW YORK STATE EDUCATION LAW AND/OR REGULATIONS AND IS A CLASS 'A' MISDEMEANOR.

CONTRACT: **HVAC**

TITLE: **PROVIDE CLASSROOMS & CELL ALTERATIONS, S-BLOCK BUILDING NO. 29**

LOCATION: **LAKEVIEW CORRECTIONAL FACILITY LAKE AVENUE BROCTON, NY**

CLIENT: **DEPARTMENT OF CORRECTIONS AND COMMUNITY SUPERVISION**

MARK	DATE	DESCRIPTION
	6/23/2017	ADDENDUM NO. 3
	5/3/2017	BID DOCUMENTS

PROJECT NUMBER: **45410 - H**

DESIGNED BY: **GTE/RWW**

DRAWN BY: **GTE**

FIELD CHECK: **OB**

APPROVED: **XXXXX**

SHEET TITLE: **BASEMENT REMOVALS PART. PLANS, A WING AND CORE**

DRAWING NUMBER: **M-100**

SHEET **2** OF **10**

Jun 23 2017 - 2:43pm
 V:\DesignAndConst\45410_30_DesignPhase\35_CAD\CadHVAC\FINAL DRAWINGS\M-100 BASEMENT REMOVALS PART.PLAN A WING AND CORE REV.dwg
 36x24 PLOT SHEET

