



Office of General Services

**DESIGN & CONSTRUCTION GROUP
THE GOVERNOR NELSON A. ROCKEFELLER
EMPIRE STATE PLAZA
ALBANY, NY 12242**

ADDENDUM NO. 2 TO PROJECT NO. M3160

CONSTRUCTION, MECHANICAL, PLUMBING, AND ELECTRICAL WORK PROVIDE FACILITY CLOSURE GOWANDA CORRECTIONAL FACILITY SOUTH ROAD GOWANDA, NEW YORK

May 18, 2021

<p>NOTE: This Addendum forms a part of the Contract Documents. Insert it in the Project Manual. Acknowledge receipt of this Addendum in the space provided on the Bid Form.</p>
--

CONTRACT DRAWINGS

1. Revised Drawings:
 - a. Drawing Nos. G-001, G-002, G-003, G-101, C-001, E-001, M-001, P-001/FP-001, noted “REVISED DRAWING 5/17/2021” accompany this Addendum and supersede the same numbered originally issued drawings.

END OF ADDENDUM

Erik T. Deyoe, P.E.
Director, Division of Design
Design & Construction

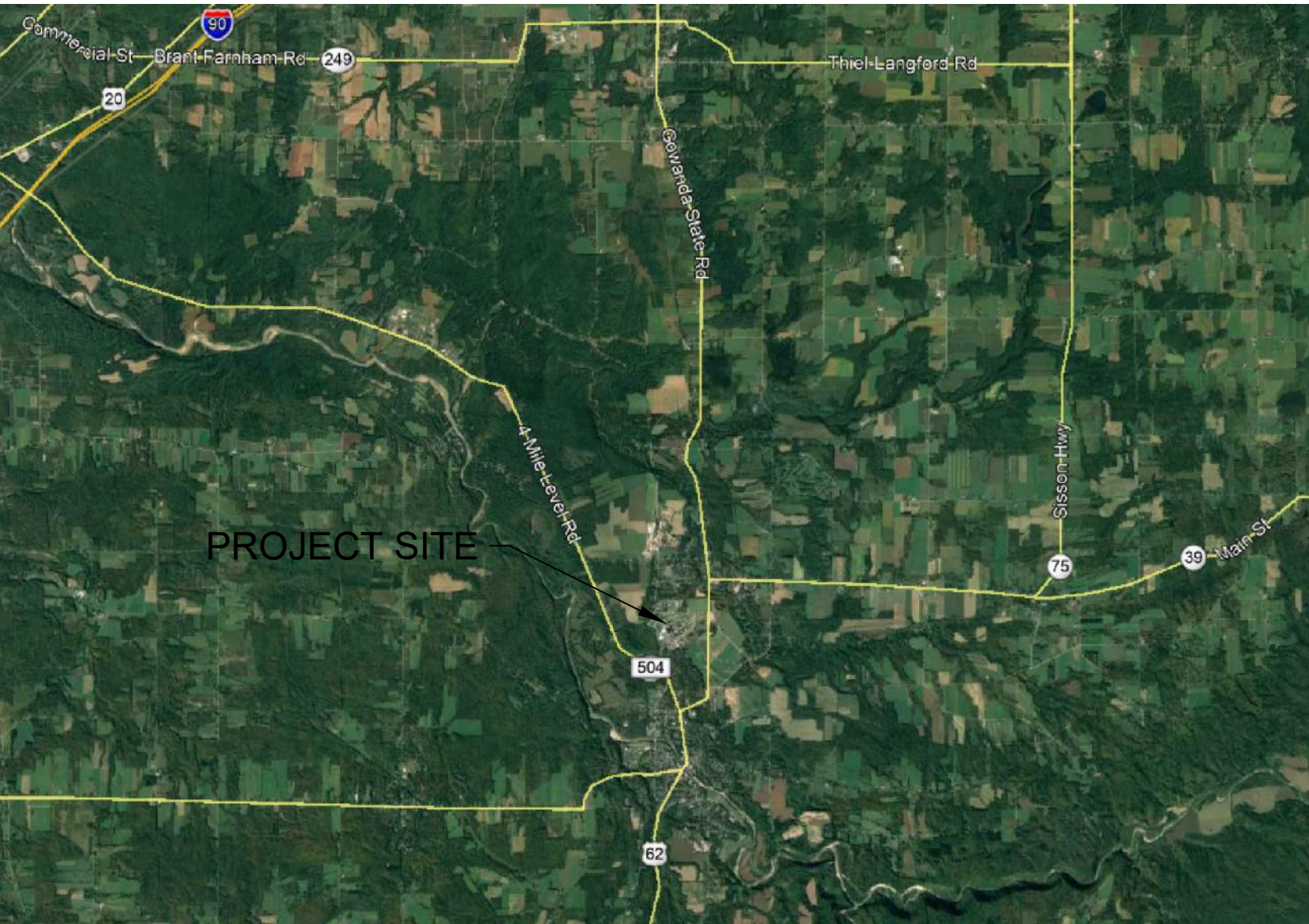
PROVIDE FACILITY CLOSURE

GOWANDA CORRECTIONAL FACILITY

SOUTH ROAD

GOWANDA, NEW YORK

O.G.S. PROJECT NO. M3160-C, E, H, P



LOCATION MAP

INDEX OF DRAWINGS

ALL CONTRACTS M3160-C, E, H, P

- GENERAL DRAWINGS
- G-001 COVER SHEET
 - G-002 GENERAL NOTES & LEGENDS
 - G-003 CODE COMPLIANCE PLAN
 - G-101 OVERALL SITE PLAN

CONSTRUCTION CONTRACT NO. M3160-C

- CONSTRUCTION DRAWINGS
- C-001 CONSTRUCTION LEGENDS, NOTES, AND SCHEDULE

ELECTRICAL CONTRACT NO. M3160-E

- ELECTRICAL DRAWINGS
- E-001 ELECTRICAL LEGENDS, NOTES, AND SCHEDULE

MECHANICAL CONTRACT NO. M3160-H

- MECHANICAL DRAWINGS
- M-001 MECHANICAL LEGENDS, NOTES, AND SCHEDULE

PLUMBING CONTRACT NO. M3160-P

- PLUMBING DRAWINGS
- P-001/FP-001 PLUMBING & FIRE PROTECTION LEGENDS, NOTES, & SCHEDULE



DESIGN & CONSTRUCTION

OVERALL CLOSURE NOTES:

- THE OVERALL GOAL OF THIS PROJECT IS TO SUPPORT THE LONG TERM CLOSURE OF THE WATERTOWN CORRECTIONAL FACILITY. IT IS THE INTENT OF THE STATE THAT ALL BUILDINGS SYSTEMS INCLUDING MECHANICAL, ELECTRICAL, PLUMBING, AND FIRE PROTECTION AS WELL AS SUPPORTING SITE INFRASTRUCTURE WILL BE CLOSED IN A MANNER THAT SUPPORTS LONG-TERM INACTIVITY AT THE FACILITY.
- SPECIFIC CLOSURE/DECOMMISSIONING ACTIVITIES AND PROCESSES WILL BE PERFORMED AS DIRECTED BY THE DIRECTOR'S REPRESENTATIVE.
- NOTE THAT THE CLOSURE INFORMATION PRESENTED ON THE CONTRACT DRAWINGS ARE INTENDED TO BE GENERAL IN NATURE AND MAY NOT BE ALL INCLUSIVE OF THE CLOSURE WORK REQUIRED TO COMPLETE THE OVERALL FOAL OF THE PROJECT AS PRESENTED IN THE CONTRACT DOCUMENTS. REFER TO THE CLOSURE PLAN PROVIDED IN THE PROJECT MANUAL APPENDIX FOR ADDITIONAL INFORMATION.
- C-, E-, H-, AND P-CONTRACTS SHALL BE MUTUALLY RESPONSIBLE FOR PLANNING, COORDINATING AND EXECUTING THE CLOSURE WORK TO PROTECT STATE ASSETS AS WELL AS SEQUENCE WORK IN A SAFE AND EFFECTIVE MANNER.
- PROVIDE A WORK PLAN FOR REVIEW AND COORDINATION WITH THE DIRECTOR'S REPRESENTATIVE A MINIMUM OF 5 DAYS PRIOR TO COMMENCING WORK AT THE SITE.
- IN GENERAL, THE SEQUENCE OF A TYPICAL BUILDING WOULD BE AS FOLLOWS. NOTE THAT THIS IS NOT INTENDED TO BE A DETAILED SEQUENCE OF WORK NOR BE APPLICABLE TO EVERY BUILDING TO BE CLOSED WITHIN THE FACILITY.
 - SHUT OFF POTABLE WATER SYSTEM AT BUILDING EXTERIOR.
 - DRAIN AND DECOMMISSION BUILDING INTERIOR PLUMBING PIPING AND POTABLE WATER SYSTEM(S).
 - DECOMMISSION BUILDING INTERIOR SANITARY SEWER SYSTEM(S).
 - DECOMMISSION BUILDING REFRIGERATION SYSTEM(S).
 - CLOSE FIRE WATER SYSTEM AT BUILDING INTERIOR.
 - DRAIN AND DECOMMISSION FIRE PROTECTION WATER SYSTEM(S).
 - TURN OFF/DECOMMISSION HVAC SYSTEM(S).
 - DECOMMISSION INTERIOR LIGHTING SYSTEMS AND ELECTRICAL SYSTEM(S).
 - DECOMMISSION BUILDING EMERGENCY LIFE AND SAFETY SYSTEM(S).
 - PROVIDE SIGNAGE AT BUILDING ENTRANCE THAT BUILDING SYSTEMS HAVE BEEN SHUT OFF (SEE NOTE A.2. ON SHEET E-001).
 - BOARD EXTERIOR DOORS AND WINDOWS, AS APPLICABLE.
 - DISCONNECT AND PLUG EXTERIOR BUILDING SANITARY SEWER LATERALS.

GENERAL CONSTRUCTION NOTES:

- EMPLOY TRAFFIC CONTROL, SECURITY, AND SAFETY MEASURES DURING CONSTRUCTION, FOR PROPER AND SAFE MAINTENANCE OF THE PROJECT SITE.
- NO WORK, STORAGE OR TRESPASS SHALL BE PERMITTED BEYOND THE PROJECT LIMITS (CLL) OR WHERE INDICATED IN THE CONTRACT DOCUMENTS.
- PROTECT EXISTING PROPERTY LINE MONUMENTATION. ANY MONUMENTATION DISTURBED OR DESTROYED SHALL BE REPLACED AT THE CONTRACTOR'S EXPENSE BY A NEW YORK STATE LICENSED LAND SURVEYOR AND UNDER THE SUPERVISION OF THE DIRECTOR'S REPRESENTATIVE.
- ANY LAWN, ROADWAYS, CURBING, UTILITIES, SITE FURNISHINGS, OR OTHER PUBLIC OR PRIVATE PROPERTY DAMAGED BY CONSTRUCTION OPERATIONS, SHALL BE RESTORED OR REPLACED TO A FINAL CONDITION EQUAL TO THE CONDITION EXISTING PRIOR TO DISTURBANCE AS REQUESTED BY THE DIRECTOR'S REPRESENTATIVE. REPLACEMENT WILL BE AT THE CONTRACTOR'S EXPENSE.
- THE TEMPORARY EROSION CONTROL MEASURES REPRESENT THE MINIMUM PROTECTION MEASURES THAT MUST BE IMPLEMENTED.
- ALL UTILITY WORK INVOLVING INTERRUPTION TO EXISTING SYSTEMS SHALL BE COORDINATED WITH THE DIRECTOR'S REPRESENTATIVE AND ASSOCIATED UTILITIES. NOTIFY THE DIRECTOR'S REPRESENTATIVE A MINIMUM OF 48 HOURS BEFORE EACH AND EVERY SYSTEM INTERRUPTION.
- COORDINATE WITH THE DIRECTOR'S REPRESENTATIVE TO MAINTAIN ACCESS TO THE FACILITY.
- ALL EXCAVATIONS SHALL BE BACKFILLED TO EXISTING GRADE AS PROMPTLY AS THE WORK PERMITS BUT NOT UNTIL COMPLETION OF THE FOLLOWING:
 - ACCEPTANCE BY THE DIRECTOR'S REPRESENTATIVE OF CONSTRUCTION BELOW FINISH GRADE.
 - INSPECTION, TESTING, APPROVAL, AND RECORDING LOCATIONS OF UNDERGROUND UTILITIES.
 - REMOVAL OF TRASH AND DEBRIS.
- COORDINATE LOCATION OF ANY DUMPSTERS/CONTAINERS TO BE LOCATED ONSITE WITH THE DIRECTOR'S REPRESENTATIVE.
- COMPLY WITH ALL PERMITS AND ASSOCIATED CONDITIONS.
- TEMPORARY STORAGE CONTAINERS SHALL BE PROVIDED BY THE CONTRACTOR AS NECESSARY TO CONTROL LITTER AND CONSTRUCTION DEBRIS FROM ENTERING ON-SITE STORMWATER DISCHARGES.
- REFER TO REQUIREMENTS OUTLINED IN THE EROSION AND SEDIMENT CONTROL NOTES PRIOR TO COMMENCEMENT OF WORK.
- PROVIDE AND MAINTAIN TEMPORARY BARRIERS AND SECURITY DEVICES.
- USE WATER MIST, TEMPORARY ENCLOSURES AND OTHER SUITABLE METHODS TO LIMIT THE SPREAD OF DUST AND DIRT. COMPLY WITH GOVERNING ENVIRONMENTAL PROTECTION REGULATIONS. DO NOT USE WATER WHEN IT MAY DAMAGE EXISTING CONSTRUCTION, SUCH AS CAUSING ICING, FLOODING, AND TRANSPORTING POLLUTANTS.
- REMOVE AND TRANSPORT DEBRIS IN A MANNER THAT WILL PREVENT SPILLAGE ON ADJACENT SURFACES AND AREAS.

REMOVAL NOTES

- CONFORM TO APPLICABLE CODES FOR REMOVAL PROCEDURES, SAFETY OF ADJACENT STRUCTURES, DUST CONTROL, RUNOFF CONTROL, HAULING, DISPOSAL, AND STORAGE OF DEBRIS.
- MAINTAIN EXISTING UTILITIES TO REMAIN IN SERVICE AND PROTECT THEM AGAINST DAMAGE DURING SELECTIVE REMOVAL OPERATIONS. DO NOT INTERRUPT EXISTING UTILITIES SERVING OPERATING FACILITIES, EXCEPT WHEN AUTHORIZED IN WRITING BY THE DIRECTOR'S REPRESENTATIVE.
- REMOVE COMPONENTS IN AN ORDERLY AND CAREFUL MANNER.
- PROTECT EXISTING FEATURES THAT ARE NOT TO BE REMOVED.
- CONDUCT OPERATIONS WITH MINIMUM INTERFERENCE TO THE FACILITY.
- DO NOT CLOSE OR OBSTRUCT ON-SITE ROADWAYS, OR SIDEWALKS WITHOUT PRIOR REVIEW AND APPROVAL FROM THE DIRECTOR'S REPRESENTATIVE.
- CEASE OPERATIONS IMMEDIATELY IF ADJACENT STRUCTURES APPEAR TO BE IN DANGER AND NOTIFY THE DIRECTOR'S REPRESENTATIVE.
- ROUGH GRADE AND COMPACT AREAS AFFECTED BY REMOVALS TO MAINTAIN SITE GRADES AND CONTOURS.
- FIELD VERIFY EXISTING CONDITIONS AND CORRELATE WITH REQUIREMENTS INDICATED ON PLANS TO DETERMINE EXTENT OF SELECTIVE REMOVALS REQUIRED.
- CONDUCT REMOVAL OPERATIONS AND REMOVE DEBRIS TO ENSURE MINIMUM INTERFERENCE WITH SELECTIVE REMOVAL OPERATIONS.
- CONDUCT REMOVAL OPERATIONS TO PREVENT INJURY TO PEOPLE AND DAMAGE TO ADJACENT BUILDINGS AND FACILITIES TO REMAIN. ENSURE SAFE PASSAGE OF PEOPLE AROUND SELECTIVE REMOVAL AREAS.
- CLEAN ADJACENT STRUCTURES AND IMPROVEMENTS OF DUST, DIRT AND DEBRIS CAUSED BY SELECTIVE REMOVAL OPERATIONS. RETURN ADJACENT AREAS TO CONDITION EXISTING BEFORE START OF SELECTIVE REMOVALS.
- PROMPTLY DISPOSE OF REMOVED MATERIALS. ALL DEBRIS RESULTING FROM REMOVAL ACTIVITIES SHALL BE DISPOSED OF OFF-SITE AT A FACILITY APPROVED TO RECEIVE THE DEBRIS. DO NOT ALLOW REMOVED MATERIALS TO ACCUMULATE ON-SITE. DO NOT BURN REMOVED MATERIALS ON-SITE.

GRADING NOTES:

- PRIOR TO SITE DISTURBANCE, CONTRACTOR TO PROVIDE EROSION AND SEDIMENT CONTROL MEASURES.
- TOPSOIL AND SEED ALL AREAS DISTURBED BY CONSTRUCTION THAT ARE TO REMAIN GREEN.
- ALL EARTHWORK SHALL BE SMOOTHLY AND EVENLY BLENDED INTO EXISTING CONDITIONS. NO WORK, STORAGE OR TRESPASS SHALL BE PERMITTED BEYOND THE BOUNDARIES OF THE GRADING AND CONTRACT LIMIT LINE WITHOUT APPROVAL BY THE DIRECTOR'S REPRESENTATIVE.

SITE PLAN NOTES:

LAYOUT :

- THE CONSTRUCTION CONTRACTOR SHALL COORDINATE ALL FIELD LAYOUT. TAKE TIES TO ALL UTILITY CONNECTIONS AND PROVIDE MARKED-UP AS BUILT PLANS FOR ALL WORK. TIES TO UTILITY CONNECTIONS, BENDS, LENGTHS OF LINES AND INVERTS SHALL BE SHOWN.
- AS-BUILT PLANS SHALL BE REVIEWED BY THE DIRECTOR'S REPRESENTATIVE. PROVIDE ANY CORRECTION OR ADDITIONS TO THE SATISFACTION OF THE DIRECTOR'S REPRESENTATIVE BEFORE UTILITIES WILL BE ACCEPTED.

UTILITY NOTES:

- ALL UNDERGROUND UTILITIES ARE SHOWN IN THEIR RELATIVE POSITION AND ARE FOR INFORMATIONAL PURPOSES ONLY. CONTRACTOR TO VERIFY THEIR ACTUAL LOCATION IN THE FIELD PRIOR TO THE COMMENCEMENT OF CONSTRUCTION.
- ANY CONDITION ENCOUNTERED IN THE FIELD DIFFERING FROM THOSE SHOWN HEREON, SHALL BE REPORTED TO THE DIRECTOR'S REPRESENTATIVE BEFORE CONSTRUCTION IS TO PROCEED.
- EXPLORATORY EXCAVATIONS SHALL BE PERFORMED BY THE CONTRACTOR AT ALL UTILITY CONNECTION LOCATIONS AND AS NEEDED TO VERIFY EXISTING CONDITIONS PRIOR TO PERFORMING WORK.
- CONTRACTOR SHALL BE RESPONSIBLE FOR DEWATERING UTILITY TRENCHES AND EXCAVATIONS AND FOR THE MAINTENANCE OF SURFACE DRAINAGE DURING THE COURSE OF THE WORK.
- VERIFY THE LOCATION OF EXISTING UNDERGROUND UTILITIES PRIOR TO EXCAVATION.

GENERAL SECURITY NOTES:

- ALL WORK NEAR THE PERIMETER SECURITY FENCES MUST BE PERFORMED IN SUCH A MANNER SO AS TO MAINTAIN PERIMETER SECURITY AT ALL TIMES. COORDINATE ALL WORK NEAR THE PERIMETER SECURITY FENCES WITH WITH THE DIRECTOR'S REPRESENTATIVE.
 - COORDINATE AND SCHEDULE ALL WORK INVOLVING OR ADJACENT TO THE PERIMETER SECURITY SYSTEMS WITH THE DIRECTOR'S REPRESENTATIVE AND THE FACILITY'S SECURITY SUPERVISORY PERSONNEL.
 - SUBMIT A WORK PLAN IN STRICT ACCORDANCE WITH SECTION 015634 OF THE PROJECT MANUAL.
 - SCHEDULE ALL WORK A MINIMUM OF 72 HOURS PRIOR TO INTENDED WORK ON OR NEAR THE PERIMETER SECURITY SYSTEMS.
- NO WORK IS TO BE PERFORMED NEAR THE PERIMETER SECURITY FENCES WITHOUT WRITTEN APPROVAL FROM THE DIRECTOR'S REPRESENTATIVE AND THE FACILITY'S SECURITY SUPERVISORY PERSONNEL.
- THE FACILITY IS PROTECTED BY PERIMETER FENCES, PERIMETER FENCE LIGHTING SYSTEM, PERIMETER ALARM SYSTEMS AND PERIMETER SURVEILLANCE CCTV SYSTEM, WHICH ARE INTEGRATED TOGETHER TO WORK AS A SINGLE PERIMETER SECURITY SYSTEM. THESE SYSTEMS SHALL BE FULLY OPERATIONAL AT ALL TIMES DURING THE WORK OF THIS CONTRACT. THE WORK REQUIRED BY THIS CONTRACT NEAR THESE SYSTEMS, SHALL BE PERFORMED IN SUCH A MANNER SO AS TO PREVENT ANY DOWN TIME (INTERRUPTIONS) TO ANY OF THESE SYSTEMS.
- THE EXACT LOCATIONS OF EXISTING UNDERGROUND UTILITIES AND PERIMETER SECURITY SYSTEM LINES ARE UNKNOWN. BEFORE ANY WORK IS STARTED NEAR THE PERIMETER FENCES, DETERMINE EXACT LOCATION OF ALL UNDERGROUND UTILITIES AND PERIMETER SECURITY SYSTEM LINES (WHETHER SHOWN ON DRAWINGS OR NOT) BY USE OF AN UNDERGROUND UTILITY LOCATOR SERVICE. MARK AND PROTECT ALL UNDERGROUND UTILITIES AND PERIMETER SECURITY SYSTEM LINES. CONTRACTOR SHALL BE HELD RESPONSIBLE FOR ANY DAMAGE TO ANY UNDERGROUND UTILITIES.
- EXTREME CAUTION SHALL BE USED WHEN WORKING NEAR THE PERIMETER SECURITY SYSTEMS AND THEIR ASSOCIATED CONDUITS. THE CONTRACTOR SHALL BE HELD RESPONSIBLE FOR ANY DAMAGE TO THESE SYSTEMS AND/OR LOSSES DUE TO DAMAGE TO THESE SYSTEMS, INCLUDING THE COST TO REPAIR THE DAMAGE AND ANY COST INCURRED BY THE STATE FOR ADDITIONAL SECURITY STAFF TO PROTECT THE PERIMETER OF THE FACILITY DUE TO ANY OUTAGES OF THE SECURITY SYSTEMS. IF ANY DAMAGE OCCURS, THEN REPAIRS SHALL BE COMPLETED IMMEDIATELY AT THE CONTRACTOR'S EXPENSE.
- ANY EXCAVATION WITHIN 3 FEET OF THE UNDERGROUND SECURITY CONDUIT/DUCTBANK AND BELOW THE UNDERGROUND SECURITY CONDUIT/DUCTBANK SHALL BE COORDINATED WITH FACILITY SECURITY STAFF AND THE DIRECTOR'S REPRESENTATIVE AND SHALL BE PERFORMED BY HAND.

EROSION AND SEDIMENT CONTROL SEQUENCING NOTES:

- PRIOR TO COMMENCING ANY CLEARING, GRUBBING, EARTHWORK ACTIVITIES, ETC. AT THE SITE, FLAG THE WORK LIMITS AND PROVIDE TEMPORARY EROSION AND SEDIMENT CONTROL MEASURES (I.E. SILT FENCES, INLET PROTECTION, STABILIZED CONSTRUCTION ENTRANCES, ETC.). TEMPORARY EROSION AND SEDIMENT CONTROL MEASURES MUST BE CONSTRUCTED, STABILIZED, AND FUNCTIONAL BEFORE SITE DISTURBANCE BEGINS WITHIN THEIR TRIBUTARY AREAS. COORDINATE WITH DIRECTOR'S REPRESENTATIVE.
- COMMENCE SITE CONSTRUCTION ACTIVITIES INCLUDING GRADING OF THE AREA OF DISTURBANCE.
- PROVIDE PROTECTIVE MEASURES AT THE LOCATIONS OF ALL GRATE INLETS AND AT THE ENDS OF ALL EXPOSED STORM SEWER PIPES. COORDINATE WITH DIRECTOR'S REPRESENTATIVE.
- AFTER COMPLETION OF CONSTRUCTION, REMOVE ALL TEMPORARY EROSION AND SEDIMENT CONTROL MEASURES AND IMMEDIATELY ESTABLISH PERMANENT VEGETATION ON THE AREAS DISTURBED DURING THEIR REMOVAL.

EROSION AND SEDIMENT CONTROL PRACTICES IMPLEMENTATION SCHEDULE

PRACTICE	INITIAL PLACEMENT	DURATION OF USE
STORM INLET PROTECTION	PRIOR TO CONSTRUCTION ACTIVITIES	UNTIL SITE STABILIZATION
SILT FENCE	PRIOR TO CONSTRUCTION ACTIVITIES	UNTIL SITE STABILIZATION
STABILIZED CONSTRUCTION ENTRANCE	BARE EARTH & SOIL STOCK PILES TO BE INACTIVE FOR 14 DAYS OR LONGER	UNTIL FINAL GRADING & SEEDING OR USE OF STOCK PILE
TEMPORARY SEEDING	COMMENCEMENT OF CONSTRUCTION ACTIVITIES	UNTIL SITE STABILIZATION
DUST CONTROL	COMMENCEMENT OF CONSTRUCTION ACTIVITIES	UNTIL SITE STABILIZATION

EROSION AND SEDIMENT CONTROL AND STORMWATER CONTROL DEVICE MAINTENANCE

- CONSTRUCTION DURATION: ALL EROSION AND SEDIMENT CONTROL DEVICES SHALL BE INSPECTED WEEKLY BY THE DIRECTOR'S REPRESENTATIVE.
 - SILT FENCE SHALL BE REPLACED WHEN TORN, IS BULGING OR NO LONGER MEETING THE INSTALLATION DETAILS.
 - INLET PROTECTION MEASURES SHALL BE INSPECTED REGULARLY AND REPAIRED OR REPLACED AS REQUIRED.
- PROJECT COMPLETION: AT PROJECT COMPLETION AND PRIOR TO PROJECT CLOSE OUT, INSPECT ALL PERMANENT EROSION AND SEDIMENT CONTROL AND STORMWATER TREATMENT AND CONVEYANCE PRACTICES.
 - ACCEPTABLE VEGETATION ESTABLISHMENT IN ACCORDANCE WITH SPECIFICATION SECTION 310101 – SITE RESTORATION.
 - DRAINAGE STRUCTURES AND PIPING SHALL BE CHECKED FOR CLOGGING AND SEDIMENT ACCUMULATION AND CLEANED IF REQUIRED.



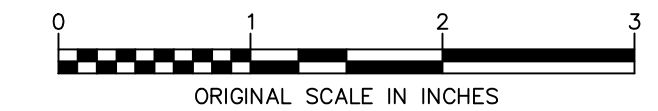
CONSULTANT

CHAZEN ENGINEERING, LAND SURVEYING
LANDSCAPE ARCHITECTURE CO., D.P.C.
JOB# 51964.04

ENERGY CODE COMPLIANCE WRITTEN STATEMENT:

TO THE BEST OF MY KNOWLEDGE, BELIEF AND PROFESSIONAL JUDGMENT, THE DRAWINGS BEARING MY PROFESSIONAL SEAL AND SIGNATURE MEET OR EXCEED THE 2020 ENERGY CONSERVATION CODE OF NEW YORK STATE

2020 FIRE CODE OF NEW YORK STATE
TO THE BEST OF THE KNOWLEDGE, BELIEF AND PROFESSIONAL JUDGMENT OF THE LICENSED PROFESSIONAL SEALING THESE PLANS AND SPECIFICATIONS, THESE PLANS AND SPECIFICATIONS ARE IN COMPLIANCE WITH THE 2020 FIRE CODE OF NEW YORK STATE.



WARNING:

THE ALTERATION OF THIS MATERIAL IN ANY WAY, UNLESS DONE UNDER THE DIRECTION OF A COMPARABLE PROFESSIONAL, I.E. ARCHITECT FOR AN ARCHITECT, ENGINEER FOR AN ENGINEER OR LANDSCAPE ARCHITECT FOR A LANDSCAPE ARCHITECT, IS A VIOLATION OF THE NEW YORK STATE EDUCATION LAW AND/OR REGULATIONS AND IS A CLASS "A" MISDEMEANOR.



CONTRACT:

GENERAL

TITLE: PROVIDE FACILITY CLOSURE

LOCATION: GOWANDA CORRECTIONAL FACILITY
S ROAD
GOWANDA, NEW YORK

CLIENT: DEPARTMENT OF CORRECTIONS AND COMMUNITY SUPERVISION

	5/17/2021	ADDENDA #2
	4/2/2021	BID DOCUMENT
MARK	DATE	DESCRIPTION

PROJECT NUMBER:	M3160
DESIGNED BY:	CHAZEN
DRAWN BY:	CHAZEN
FIELD CHECK:	
APPROVED:	

SHEET TITLE:

GENERAL NOTES & LEGENDS

DRAWING NUMBER: G-002

Building No.	Building Name	Building Use	Occupancy Classification	Applicable Codes
32	PROGRAM BUILDING	B	E	2020 Fire Code of New York State
35	LAWN & GROUNDS	S-1, S-2	S-2	2020 Fire Code of New York State
37	RECYCLING STORAGE	S-2	S-2	2020 Fire Code of New York State
038A	GREENHOUSE (WEST)		U	2020 Fire Code of New York State
038B	GREENHOUSE (EAST)		U	2020 Fire Code of New York State
40	TRANSFORMER		U	2020 Fire Code of New York State
61	MAINTENANCE/COMMISSARY	A-2	M	2020 Fire Code of New York State
65	BUILDING "C" INMATE HOUSING	I-3 CS	I-3 CS	2020 Fire Code of New York State
66	DISCIPLINARY	I-3 CS	I-3 CS	2020 Fire Code of New York State
67	BUILDING "D" INMATE HOUSING	I-3 CS	I-3 CS	2020 Fire Code of New York State
81	RECYCLING CENTER OFFICE	B, S	B	2020 Fire Code of New York State
86	BLDGS "A" & "B" INMATE HOUSING	I-3 CS	I-3 CS	2020 Fire Code of New York State
90	STADIUM	A-5	A-5	2020 Fire Code of New York State
99	PROGRAMS	B,S,A,M	B	2020 Fire Code of New York State
121	SPECIAL HOUSING UNIT	I-3 CS	I-3 CS	2020 Fire Code of New York State
122	GUARD TOWER		U	2020 Fire Code of New York State
123	ADMINISTRATION BUILDING	B, I-3 CS, A-3	B	2020 Fire Code of New York State
124	VISITOR BUILDING	B, I-3 CS	B	2020 Fire Code of New York State
125	REC. YARD #1 TOILET		U	2020 Fire Code of New York State
127	REC. YARD #2 PAVILION		U	2020 Fire Code of New York State
128	GUARD HOUSE		U	2020 Fire Code of New York State
129	VISITOR'S PAVILION		U	2020 Fire Code of New York State
133	REC. YARD #1 C.O. SHACK (WEST)		U	2020 Fire Code of New York State
134	REC. YARD GUARD TOWER		U	2020 Fire Code of New York State
135	REC. YARD GUARD TOWER		U	2020 Fire Code of New York State
179	STORAGE-- HORTICULTURE	S-1, S-2	S-2	2020 Fire Code of New York State
180	GREENHOUSE		U	2020 Fire Code of New York State
181	REC. YARD #1 GATE SHACK		U	2020 Fire Code of New York State
182	REC. YARD #2 C.O. SHACK (EAST)		U	2020 Fire Code of New York State
183	GROUND'S STORAGE		U	2020 Fire Code of New York State
184	GROUND'S STORAGE		U	2020 Fire Code of New York State
185	REC. STORAGE		U	2020 Fire Code of New York State
186	REC. STORAGE		U	2020 Fire Code of New York State
187	REC. YARD #2 C.O.		U	2020 Fire Code of New York State
188	REC. YARD #2 C.O.		U	2020 Fire Code of New York State
189	REC. YARD #2 C.O.		U	2020 Fire Code of New York State
190	REC. YARD PAVILION		U	2020 Fire Code of New York State
192	VISITOR'S PAVILION #2		U	2020 Fire Code of New York State
193	COMPOST		U	2020 Fire Code of New York State
194	S.H.U. STORAGE		U	2020 Fire Code of New York State
195	REC. YARD #2 C.O. SHACK		U	2020 Fire Code of New York State
196	REC. YARD #2 PAVILION (WEIGHT AREA)		U	2020 Fire Code of New York State
197	FRISK SHACK		U	2020 Fire Code of New York State
198	REC. YARD #2 TOILET		U	2020 Fire Code of New York State
201	TRAINING CENTER (OFF CAMPUS)	B, S-2	B	2020 Fire Code of New York State
202	PAVILION (OFF CAMPUS)		U	2020 Fire Code of New York State
225	CONNECTING CORRIDORS		U	2020 Fire Code of New York State
226	STEAM TUNNEL		U	2020 Fire Code of New York State
227	GUARD SHACK		U	2020 Fire Code of New York State
228	GUARD SHED		U	2020 Fire Code of New York State
229	MAINTENANCE STORAGE		U	2020 Fire Code of New York State
230	STORAGE SHED		U	2020 Fire Code of New York State

BUILDING CODE CLOSURE NOTES & ACTIONS:

1.

AS PER FC SECTION 311 VACANT PREMISES SHALL BE BOARDED, LOCKED, BLOCKED OR OTHERWISE PROTECTED TO PREVENT ENTRY BY UNAUTHORIZED INDIVIDUALS. THE PREMISES SHALL BE MAINTAINED IN A CLEAN, SAFE, SECURE AND SANITARY CONDITION CLEAR OF WASTE OR HAZARDOUS MATERIALS SO AS NOT TO CAUSE A BLIGHTING PROBLEM OR ADVERSELY AFFECT THE PUBLIC HEALTH OR SAFETY.
2.

PLACARDS SHALL BE AFFIXED TO BUILDINGS WHICH ARE APPROVED AS VACANT BY THE JURISDICTION HAVING AUTHORIZATION. COORDINATE WITH THE DIRECTOR'S REPRESENTATIVE FOR PLACARD PLACEMENT.
3.

PLACARDS SHALL BE 24 INCHES BY 24 INCHES MINIMUM IN SIZE WITH A RED BACKGROUND, WHITE REFLECTIVE STRIPES, AND A WHITE REFLECTIVE BORDER. THE STRIPES AND BORDER SHALL HAVE A 2-INCH MINIMUM STROKE. PLACARDS SHALL BEAR THE DATE OF THEIR APPLICATION TO THE BUILDING AND THE DATE OF THE MOST RECENT INSPECTION. PLACARDS SHALL BE APPLIED ON THE FRONT OF THE STRUCTURE AND BE VISIBLE FROM THE STREET. ADDITIONAL PLACARDS SHALL BE APPLIED TO THE SIDE OF EACH ENTRANCE TO THE STRUCTURE. IT SHALL BE INDICATED ON THE PLACARD BY SYMBOL AS OF THE TIME OF MARKING IF THE FOLLOWING CONDITIONS EXISTED;

3.1.

NORMAL STRUCTURAL CONDITIONS.

3.2.

STRUCTURAL OR INTERIOR HAZARDS EXIST INDICATING EXTREME CAUTION FOR INTERIOR FIREFIGHTING OR RESCUE OPERATIONS.

3.3.

STRUCTURAL OR INTERIOR HAZARDS EXIST TO LIMIT FIREFIGHTING TO EXTERIOR OPERATIONS ONLY, WITH ENTRY ONLY FOR KNOWN LIFE HAZARDS.

3.4.

KNOWN HAZARDS SHALL BE INDICATED AS FOLLOWS;

3.4.1.

R/O---ROOF OPEN.

3.4.2.

S/M---STAIRS, STEPS AND LANDING MISSING.

3.4.3.

F/E---AVOID FIRE ESCAPES.

3.4.4.

H/F---HOLES IN FLOOR.

4.

PER SECTION 311.2.2 FIRE PROTECTION, FIRE ALARM, SPRINKLER AND STAND-PIPE SYSTEMS SHALL BE MAINTAINED IN AN OPERABLE CONDITION AT ALL TIMES WITH THE FOLLOWING EXCEPTIONS:

4.1.

WHERE THE PREMISES HAVE BEEN CLEARED OF ALL COMBUSTIBLE MATERIALS AND DEBRIS AND, IN THE OPINION OF THE FIRE CODE OFFICIAL, THE TYPE OF CONSTRUCTION, FIRE SEPARATION DISTANCE, AND SECURITY OF THE PREMISES DO NOT CREATE A FIRE HAZARD.

4.2.

WHERE APPROVED BY THE FIRE CODE OFFICIAL, BUILDINGS THAT WILL NOT BE HEATED AND WHERE FIRE PROTECTION SYSTEMS WILL BE EXPOSED TO FREEZING TEMPERATURES, FIRE ALARM AND SPRINKLER SYSTEMS ARE PERMITTED TO BE PLACED OUT OF SERVICE AND STANDPIPES ARE PERMITTED TO BE MAINTAINED AS DRY SYSTEMS (WITHOUT AN AUTOMATIC WATER SUPPLY), PROVIDED THAT THE BUILDING DOES NOT HAVE CONTENTS OR STORAGE, AND WINDOWS, DOORS AND OTHER OPENINGS ARE SECURED TO PROHIBIT ENTRY BY UNAUTHORIZED PERSONS.

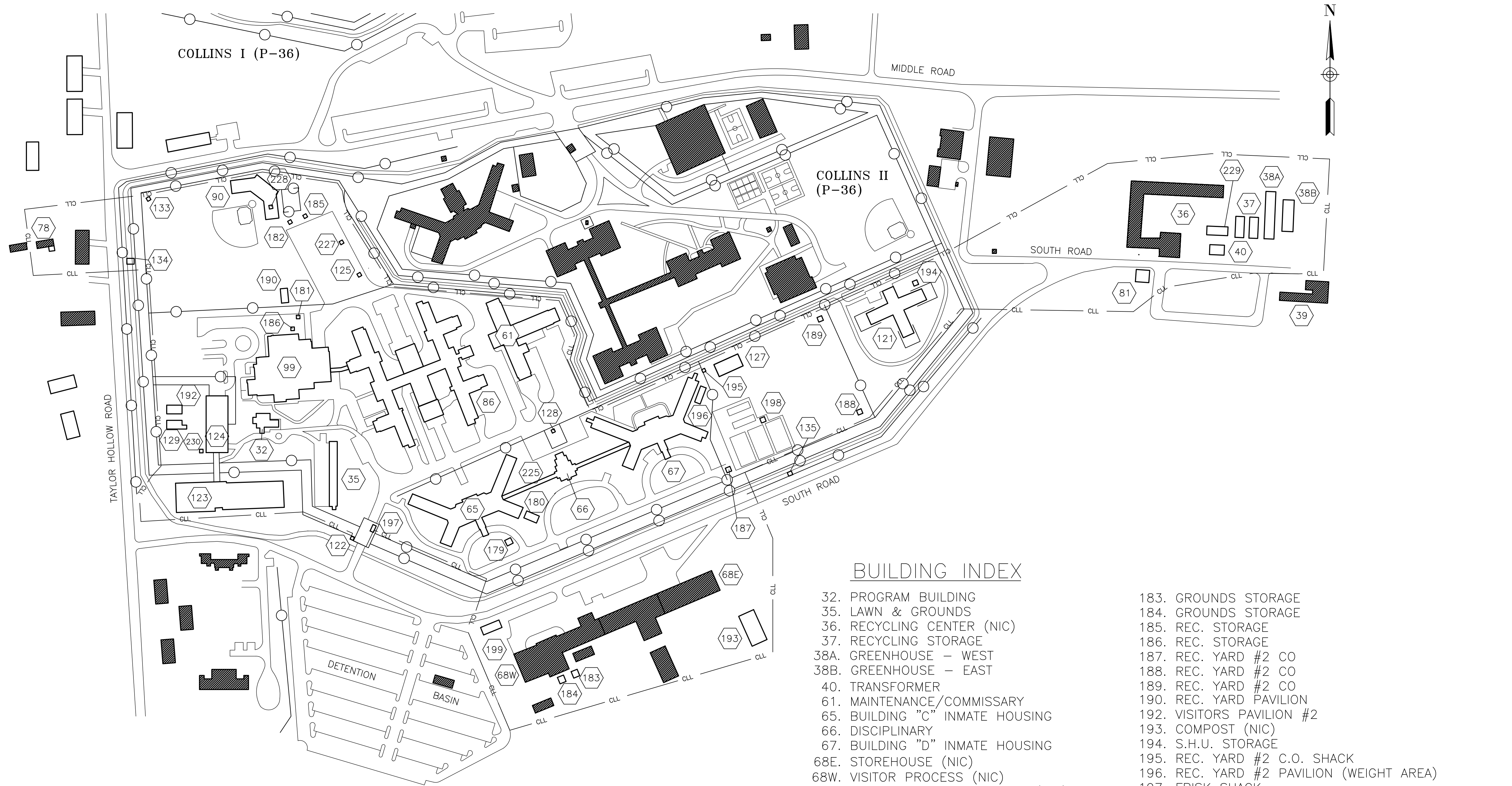
4.3.

COORDINATE WITH THE DIRECTOR'S REPRESENTATIVE FOR REVIEW BY THE FIRE CODE OFFICIAL PRIOR TO FINAL BUILDING CLOSURE.
- 1 CODE SUMMARY TABLE
- SCALE: NTS
- NEW YORK

STATE OF

OPPORTUNITY.

Office of
General Services
- DESIGN & CONSTRUCTION
- CONSULTANT
- CHAZEN ENGINEERING, LAND SURVEYING
LANDSCAPE ARCHITECTURE CO., D.P.C.
JOB# 51964.04
- ENERGY CODE COMPLIANCE WRITTEN STATEMENT:
- TO THE BEST OF MY KNOWLEDGE, BELIEF AND PROFESSIONAL JUDGMENT, THE DRAWINGS BEARING MY PROFESSIONAL SEAL AND SIGNATURE MEET OR EXCEED THE 2020 ENERGY CONSERVATION CODE OF NEW YORK STATE
- 2020 FIRE CODE OF NEW YORK STATE
- TO THE BEST OF THE KNOWLEDGE, BELIEF AND PROFESSIONAL JUDGMENT OF THE LICENSED PROFESSIONAL SEALING THESE PLANS AND SPECIFICATIONS, THESE PLANS AND SPECIFICATIONS ARE IN COMPLIANCE WITH THE 2020 FIRE CODE OF NEW YORK STATE.
-
- WARNING:
- THE ALTERATION OF THIS MATERIAL IN ANY WAY, UNLESS DONE UNDER THE DIRECTION OF A COMPARABLE PROFESSIONAL, I.E. ARCHITECT FOR AN ARCHITECT, ENGINEER FOR AN ENGINEER OR LANDSCAPE ARCHITECT FOR A LANDSCAPE ARCHITECT, IS A VIOLATION OF THE NEW YORK STATE EDUCATION LAW AND/OR REGULATIONS AND IS A CLASS "A" MISDEMEANOR.
-
- CONTRACT:
- GENERAL
- TITLE: PROVIDE FACILITY CLOSURE
- LOCATION: GOWANDA CORRECTIONAL FACILITY
S ROAD
GOWANDA, NEW YORK
- CLIENT: DEPARTMENT OF CORRECTIONS AND
COMMUNITY SUPERVISION
- | | | |
|-----------------|-----------|--------------|
| | | |
| | | |
| | | |
| | | |
| | | |
| | | |
| | | |
| | 5/17/2021 | ADDENDA #2 |
| | 4/2/2021 | BID DOCUMENT |
| MARK | DATE | DESCRIPTION |
| PROJECT NUMBER: | M3160 | |
| DESIGNED BY: | CHAZEN | |
| DRAWN BY: | CHAZEN | |
| FIELD CHECK: | | |
| APPROVED: | | |
- SHEET TITLE:
- CODE
COMPLIANCE
PLAN
- DRAWING NUMBER:
- G-003
- May 17, 2021 - 11:25am
Z:\projects\51964-51999\51964 NYSOCES\51964.04 - Gowanda CF Closure Project\DWG\00_SD625_0003_51964.04_CODECOMPLIANCEPLAN.dwg
- 36x24 PLOT SHEET



1 **OVERALL CONTRACT SITE PLAN**
SCALE: 1"=1500'

BUILDING INDEX

- | | |
|-------------------------------------|--|
| 32. PROGRAM BUILDING | 183. GROUNDS STORAGE |
| 35. LAWN & GROUNDS | 184. GROUNDS STORAGE |
| 36. RECYCLING CENTER (NIC) | 185. REC. STORAGE |
| 37. RECYCLING STORAGE | 186. REC. STORAGE |
| 38A. GREENHOUSE - WEST | 187. REC. YARD #2 CO |
| 38B. GREENHOUSE - EAST | 188. REC. YARD #2 CO |
| 40. TRANSFORMER | 189. REC. YARD #2 CO |
| 61. MAINTENANCE/COMMISSARY | 190. REC. YARD PAVILION |
| 65. BUILDING "C" INMATE HOUSING | 192. VISITORS PAVILION #2 |
| 66. DISCIPLINARY | 193. COMPOST (NIC) |
| 67. BUILDING "D" INMATE HOUSING | 194. S.H.U. STORAGE |
| 68E. STOREHOUSE (NIC) | 195. REC. YARD #2 C.O. SHACK |
| 68W. VISITOR PROCESS (NIC) | 196. REC. YARD #2 PAVILION (WEIGHT AREA) |
| 78. FIRE AND SAFETY BUILDING (NIC) | 197. FRISK SHACK |
| 81. RECYCLING CENTER OFFICE | 198. REC. YARD #2 TOILET |
| 86. BLDGS "A" & "B" INMATE HOUSING | 199. EMERGENCY PURSUIT (NIC, PREVIOUSLY REMOVED) |
| 90. STADIUM | 201. TRAINING CENTER (OFF CAMPUS) |
| 99. PROGRAMS | 202. PAVILION (OFF CAMPUS) |
| 121. SPECIAL HOUSING UNIT | 225. CONNECTING CORRIDORS |
| 122. GUARD TOWER | 226. STEAM TUNNEL |
| 123. ADMINISTRATION BUILDING | 227. GUARD SHACK |
| 124. VISITOR BUILDING | 228. GUARD SHED |
| 125. REC. YARD #1 TOILET | 229. MAINTENANCE STORAGE |
| 127. REC. YARD #2 PAVILION | 230. STORAGE SHED |
| 128. GUARD HOUSE | |
| 129. VISITOR'S PAVILION | |
| 133. REC. YARD #1 C.O. SHACK (WEST) | |
| 134. REC YARD GUARD TOWER | |
| 135. REC YARD GUARD TOWER | |
| 179. STORAGE-HORTICULTURE | |
| 180. GREENHOUSE | |
| 181. REC YARD #1 GATE SHACK | |
| 182. REC YARD #1 CO SHACK EAST | |

 COLLINS CORRECTIONAL FACILITY BUILDINGS (NIC)

DESIGN & CONSTRUCTION

CONSULTANT

CHAZEN ENGINEERING, LAND SURVEYING

LANDSCAPE ARCHITECTURE CO., D.P.C.

JOB# 51964.04

ENERGY CODE COMPLIANCE WRITTEN STATEMENT:

TO THE BEST OF MY KNOWLEDGE, BELIEF AND PROFESSIONAL JUDGMENT, THE DRAWINGS BEARING MY PROFESSIONAL SEAL AND SIGNATURE MEET OR EXCEED THE 2020 ENERGY CONSERVATION CODE OF NEW YORK STATE.

2020 FIRE CODE OF NEW YORK STATE

TO THE BEST OF THE KNOWLEDGE, BELIEF AND PROFESSIONAL JUDGMENT OF THE LICENSED PROFESSIONAL SEALING THESE PLANS AND SPECIFICATIONS, THESE PLANS AND SPECIFICATIONS ARE IN COMPLIANCE WITH THE 2020 FIRE CODE OF NEW YORK STATE.

0 1 2 3
ORIGINAL SCALE IN INCHES

WARNING:

THE ALTERATION OF THIS MATERIAL IN ANY WAY, UNLESS DONE UNDER THE DIRECTION OF A COMPARABLE PROFESSIONAL, I.E. ARCHITECT FOR AN ARCHITECT, ENGINEER FOR AN ENGINEER OR LANDSCAPE ARCHITECT FOR A LANDSCAPE ARCHITECT, IS A VIOLATION OF THE NEW YORK STATE EDUCATION LAW AND/OR REGULATIONS AND IS A CLASS "A" MISDEMEANOR.



CONTRACT:

GENERAL

TITLE: PROVIDE FACILITY CLOSURE

LOCATION: GOWANDA CORRECTIONAL FACILITY
S ROAD
GOWANDA, NEW YORK

CLIENT: DEPARTMENT OF CORRECTIONS AND
COMMUNITY SUPERVISION

	5/17/2021	ADDENDA #2
	4/2/2021	BID DOCUMENT
MARK	DATE	DESCRIPTION
PROJECT NUMBER:	M3160	
DESIGNED BY:	CHAZEN	
DRAWN BY:	CHAZEN	
FIELD CHECK:		
APPROVED:		
SHEET TITLE:		

OVERALL SITE PLAN

DRAWING NUMBER:

G-101

Building No.	Building Name	Building Closure Action
32	PROGRAM BUILDING	A, B, C, D, E, F, G
35	LAWN & GROUNDS	C, D, E, F, G
37	RECYCLING STORAGE	C, D, E, F, G
038A	GREENHOUSE (WEST)	C, D, E, F, G
038B	GREENHOUSE (EAST)	C, D, E, F, G
40	TRANSFORMER	No action necessary
61	MAINTENANCE/COMMISSARY	A, B, C, D, E, F, G
65	BUILDING "C" INMATE HOUSING	A, B, C, D, E, F, G
66	DISCIPLINARY	A, B, C, D, E, F, G
67	BUILDING "D" INMATE HOUSING	A, B, C, D, E, F, G
81	RECYCLING CENTER OFFICE	A, B, C, D, E, F, G
86	BLDGS "A" & "B" INMATE HOUSING	A, B, C, D, E, F, G
90	STADIUM	A, B, C, D, E, F, G
99	PROGRAMS	A, B, C, D, E, F, G
121	SPECIAL HOUSING UNIT	A, B, C, D, E, F, G
122	GUARD TOWER	A, B, C, D, E, F, G
123	ADMINISTRATION BUILDING	A, B, C, D, E, F, G
124	VISITOR BUILDING	A, B, C, D, E, F, G
125	REC. YARD #1 TOILET	A, B, C, D, E, F, G
127	REC. YARD #2 PAVILION	No action necessary
128	GUARD HOUSE	A, B, C, D, E, F, G
129	VISITOR'S PAVILION	No action necessary
133	REC. YARD #1 C.O. SHACK (WEST)	C, D, E, F, G
134	REC. YARD GUARD TOWER	C, D, E, F, G, secure entry to exterior stairway
135	REC. YARD GUARD TOWER	C, D, E, F, G, secure entry to exterior stairway
179	STORAGE - HORTICULTURE	C, D, E, F, G
180	GREENHOUSE	D, F, G, remove plastic greenhouse insulation.
181	REC. YARD #1 GATE SHACK	C, D, E, F, G
182	REC. YARD #2 C.O. SHACK (EAST)	C, D, E, F, G
183	GROUNDS STORAGE	C, D, E, F, G
184	GROUNDS STORAGE	C, D, E, F, G
185	REC. STORAGE	C, D, E, F, G
186	REC. STORAGE	C, D, E, F, G
187	REC. YARD #2 C.O.	C, D, E, F, G
188	REC. YARD #2 C.O.	C, D, E, F, G
189	REC. YARD #2 C.O.	C, D, E, F, G
190	REC. YARD PAVILION	No action necessary
192	VISITOR'S PAVILION #2	No action necessary
193	COMPOST	C, D, E, F, G
194	S.H.U. STORAGE	C, D, E, F, G
195	REC. YARD #2 C.O. SHACK	C, D, E, F, G
196	REC. YARD #2 PAVILION (WEIGHT AREA)	No action necessary
197	FRISK SHACK	C, D, E, F, G
198	REC. YARD #2 TOILET	A, B, C, D, E, F, G
201	TRAINING CENTER (OFF CAMPUS)	A, B, C, D, E, F, G
202	PAVILION (OFF CAMPUS)	No action necessary
225	CONNECTING CORRIDORS	A, B, C, D, E, F, G
226	STEAM TUNNEL	A, B, C, D, E, F, G
227	GUARD SHACK	C, D, E, F, G
228	GUARD SHED	C, D, E, F, G
229	MAINTENANCE STORAGE	C, D, E, F, G
230	STORAGE SHED	D, F, G

1

C-CONTRACT CLOSURE TABULATION

SCALE: NTS

C-CONTRACT BUILDING CLOSURE ACTIONS:

THE BUILDING CLOSURE ACTIONS BELOW ARE TO BE CLOSELY COORDINATED WITH THE DIRECTOR'S REPRESENTATIVE.

A. BUILDING WATER SERVICE

THE SITE WATER DISTRIBUTION SYSTEM WILL BECOME INACTIVE. DISCONNECT AND DRAIN ALL WATER SERVICES TO EXISTING BUILDINGS AND INTERIOR PIPING.

- ISOLATE THE BUILDING WATER SERVICE FROM THE SITE PIPING BY DISCONNECTING THE SERVICE PIPE PRIOR TO IT ENTERING THE BUILDING.
- PHYSICALLY DISCONNECT ALL WATER SERVICE LINES (DOMESTIC AND FIRE) TO THE BUILDING. DISCONNECTION OF WATER SERVICES SHALL BE BELOW THE FROST LINE (5' MINIMUM) TO PREVENT FREEZING.
- DRAIN ALL WATER SERVICE LATERALS. DISCONNECTED SERVICES SHALL BE CAPPED TO PREVENT WATER INTRUSION.
- DO NOT REMOVE COPPER PIPING FROM BUILDINGS.

B. BUILDING SANITARY SEWER SERVICE

THE SITE SANITARY SEWER COLLECTION SYSTEM WILL BECOME INACTIVE. DISCONNECT AND PLUG ALL SANITARY SEWER LATERALS TO EXISTING BUILDINGS TO BE CLOSED.

- PHYSICALLY DISCONNECT (CUT AND CAP/PLUG) THE SANITARY SEWER LATERAL 5' FROM THE BUILDING FACE
- CLEAN ANY BUILDING INTERIOR GREASE TRAPS. GREASE SHALL BE REMOVED AND DISPOSED OF IN ACCORDANCE WITH APPROPRIATE ENVIRONMENTAL REGULATIONS.

C. BUILDING STORM WATER SYSTEM

THE SITE STORM WATER SYSTEM WILL REMAIN ACTIVE IN ORDER TO PROVIDE DRAINAGE OF THE SITE AND ROADWAYS DUE TO RAIN AND SNOW.

- VERIFY THAT ALL DOWNSPOUTS AND ROOF LEADERS ARE CLEAR OF DEBRIS. PROVIDE POSITIVE DRAINAGE AWAY FROM THE BUILDING. COORDINATE WITH DIRECTOR'S REPRESENTATIVE.
- CLEAN ALL BUILDING ROOF DRAINS OF DEBRIS.

D. BUILDING FURNITURE AND EQUIPMENT

- ALL FURNITURE, NON-FIXED EQUIPMENT, AND SELECTED FIXED EQUIPMENT SHALL BE REMOVED FROM THE BUILDING. THIS WORK WILL PRIMARILY BE COMPLETED BY DOCCS STAFF. COORDINATE ANY REMAINING FURNITURE/EQUIPMENT REMOVAL WITH THE DIRECTOR'S REPRESENTATIVE TO BE DISPOSED OF OFFSITE.

E. BUILDING PHONE/DATA SYSTEM

- THE DECOMMISSIONING OF PHONE AND DATA SYSTEMS WILL BE PERFORMED BY MIS. COORDINATE WITH THE DIRECTOR'S REPRESENTATIVE.
- DO NOT DISTURB ANY TELECOMMUNICATION WIRING OR DEVICES.

F. BUILDING HAZARDOUS MATERIALS

- NOTE THAT A HAZARDOUS MATERIAL INVESTIGATION HAS NOT BEEN COMPLETED FOR THIS PROJECT.
- PROMPTLY NOTIFY THE DIRECTOR'S REPRESENTATIVE OF ANY HAZARDOUS MATERIAL THAT WOULD BE IMPACTED BY THE CLOSURE ACTIONS FOR THIRD PARTY SAMPLING AND TESTING.
- DO NOT REMOVE OR DISTURB ANY SUSPECTED HAZARDOUS MATERIALS UNTIL SAMPLING AND TESTING IS COMPLETE AND SPECIFIC DIRECTION IS PROVIDED BY THE DIRECTOR'S REPRESENTATIVE.

G. BUILDING WINDOWS AND DOORS

- SECURE ALL EXTERIOR DOORS WITH PRESSURE TREATED PLYWOOD. REFER TO SPECIFICATION SECTION 061000 FOR ADDITIONAL INFORMATION.
- FOR BUILDINGS INSIDE SECURE PERIMETER - SECURE ALL FIRST AND SECOND STORY WINDOWS WHICH FACE THE SECURE PERIMETER (FENCE) WITH PRESSURE TREATED PLYWOOD. REFER TO SPECIFICATION SECTION 061000 FOR ADDITIONAL INFORMATION.
- FOR BUILDINGS OUTSIDE SECURE PERIMETER - SECURE ALL FIRST AND SECOND STORY WINDOWS WITH PRESSURE TREATED PLYWOOD. REFER TO SPECIFICATION SECTION 061000 FOR ADDITIONAL INFORMATION.

C-CONTRACT SITE CLOSURE ACTIONS:

SITE UTILITY SERVICES AND SYSTEMS INCLUDE ALL INFRASTRUCTURE WHICH SERVICES BUILDINGS BEING DECOMMISSIONED AND IS NO LONGER REQUIRED FOR SERVICE. THESE INCLUDE UNDERGROUND WATER DISTRIBUTION PIPING, SANITARY SEWER COLLECTION SYSTEM, STORM WATER COLLECTION SYSTEM, AND GROUNDS.

THE SITE CLOSURE ACTIONS BELOW ARE TO BE CLOSELY COORDINATED WITH THE DIRECTOR'S REPRESENTATIVE.

H. WATER DISTRIBUTION SYSTEM

- THE WATER MAINS ON THE SITE WILL BECOME INACTIVE.
- SHUT ALL MAIN WATER CONTROL VALVES OFF FROM THE MUNICIPAL WATER TO THE ENTIRE CAMPUS. EXCAVATE AND CUT SERVICE MAINS TO THE CAMPUS AND CAP OFF TO PROTECT AGAINST POTENTIAL CONTROL VALVE LEAKS.
- DRAIN THE WATER DISTRIBUTION SYSTEM PIPING TO PREVENT FREEZING. DRAINING SHOULD BE ACCOMPLISHED BY OPENING ALL HYDRANTS AND UTILIZING COMPRESSED AIR TO AID IN WATER REMOVAL, IF NECESSARY.
- EXISTING SITE HYDRANTS SHALL BE LEFT IN PLACE. PROVIDE BURLAP OR HDPE BAG AND SECURELY FASTEN TO EACH ONSITE HYDRANT. PROVIDE SIGNAGE ON ALL HYDRANTS INDICATING "HYDRANT NOT IN OPERATION".
- INCOMING LATERALS THAT SERVICE BUILDINGS. SHUT OFF ALL CONTROL VALVES ON POTABLE WATER SERVICES AND FIRE WATER SERVICES TO ALL BUILDINGS. EXCAVATE, CUT, AND CAP OFF AT CONTROL VALVES TO PROTECT AGAINST POTENTIAL CONTROL VALVE LEAKS.
- COORDINATE WITH DIRECTOR'S REPRESENTATIVE BEFORE SHUTTING OFF WATER TO THE GOWANDA CAMPUS AND INTERIOR WATER UTILITIES THAT CONTROL POTABLE AND FIRE WATER SERVICES OUTSIDE EACH BUILDING. INSIDE OF BUILDING WORK CONDUCTED BY P-CONTRACT.
- STAKE WITH STEEL ROD IN THE LOCATION OF POTABLE WATER VALVES AND FIRE VALVES EXTERIOR TO EACH BUILDING. COLOR CODE EACH ROD BLUE FOR POTABLE WATER AND RED FOR FIRE. PROVIDE AS-BUILT DRAWINGS WITH THESE LOCATIONS.

I. SANITARY SEWER SYSTEM

THE SITE SANITARY SEWER COLLECTION SYSTEM WILL BECOME INACTIVE. ALL POTENTIAL HEALTH HAZARDS ASSOCIATED WITH THE SYSTEM WILL BE ADDRESSED. DECOMMISSIONING WILL INVOLVE FLUSHING THE COLLECTION SYSTEM PIPING AND MANHOLES FOR REMOVAL OF ALL GRIT AND SOLIDS FROM THE SYSTEM.

- NOTIFY DIRECTOR'S REPRESENTATIVE A MINIMUM OF FIVE (5) DAYS PRIOR TO CLEANING/JETTING THE SANITARY SEWER SYSTEM.
- CLEAN ALL SANITARY MANHOLES BY FLUSHING OR UTILIZING A VAC TRUCK.
- JET ALL ONSITE SANITARY SEWER PIPING.
- REMOVE ALL DEBRIS ACCUMULATED FROM THE CLEANING OPERATION AND DISPOSE AT A SUITABLE OFF SITE LOCATION.
- TACK WELD ALL SANITARY SEWER MANHOLE LIDS.
- REMOVE GREASE FROM ALL EXTERIOR GREASE TRAPS. DISPOSED OF MATERIAL IN ACCORDANCE WITH APPROPRIATE ENVIRONMENTAL REGULATIONS.

J. STORM WATER SYSTEM

THE SITE STORM WATER SYSTEM WILL REMAIN ACTIVE IN ORDER TO PROVIDE DRAINAGE OF THE SITE AND ROADWAYS DUE TO RAIN AND SNOW.

- CLEAN ALL STORM CATCH BASINS AND MANHOLES UTILIZING A VAC TRUCK.
- JET ALL ONSITE STORM SEWER PIPING.
- TACK WELD ALL STORM SEWER CATCH BASIN AND MANHOLE LIDS.

K. NATURAL GAS FUEL SYSTEM

THE SITE NATURAL GAS FUEL SYSTEM SHALL BECOME INACTIVE.

- TURN OFF/SECURE MAIN NATURAL GAS CONNECTION AT THE FACILITY. COORDINATE WITH DIRECTOR'S REPRESENTATIVE.
- TURN OFF/SECURE NATURAL GAS ISOLATION VALVE AT INDIVIDUAL BUILDINGS. LOCKOUT NATURAL GAS VALVING AT THE BUILDING ENTRANCE.
- PURGE ONSITE NATURAL GAS PIPING FROM REMAINING NATURAL GAS.
- DIRECTOR'S REPRESENTATIVE TO COORDINATE WITH UTILITY FOR NATURAL GAS CLOSURE REQUIREMENTS.

L. LAWN AND GROUNDS

THE FACILITY GROUNDS SHALL NO LONGER BE MAINTAINED BY DOCCS.

- POWER EQUIPMENT, GASOLINE AND OIL TO BE REMOVED BY DOCCS. ANY REMAINING EQUIPMENT SHALL BE REMOVED AND DISPOSED OF OFFSITE AT A DESIGNATED CARETAKING FACILITY.
- PERFORM ALL SNOW REMOVAL REQUIRED TO MAINTAIN EMERGENCY ACCESS TO THE SITE WHILE THE WORK IS BEING PERFORMED. COORDINATE WITH DIRECTOR'S REPRESENTATIVE.
- PERFORM YARD MAINTENANCE (MOWING) AS NEEDED TO FACILITATE THE CLOSURE WORK AND AS REQUESTED BY THE DIRECTOR'S REPRESENTATIVE.

L. REGULATORY ENVIRONMENTAL REQUIREMENTS

HAZARDOUS WASTE

ANY HAZARDOUS WASTE ENCOUNTERED DURING CLOSURE PROCEDURES SHALL BE HANDLED IN ACCORDANCE WITH DOCCS DIRECTIVE 4055 AND ALL LOCAL, STATE, AND FEDERAL REGULATIONS.



DESIGN & CONSTRUCTION

CONSULTANT

CHAZEN ENGINEERING, LAND SURVEYING

LANDSCAPE ARCHITECTURE CO., D.P.C.

JOB# 51964.04

ENERGY CODE COMPLIANCE WRITTEN STATEMENT:

TO THE BEST OF MY KNOWLEDGE, BELIEF AND PROFESSIONAL JUDGMENT, THE DRAWINGS BEARING MY PROFESSIONAL SEAL AND SIGNATURE MEET OR EXCEED THE 2020 ENERGY CONSERVATION CODE OF NEW YORK STATE

2020 FIRE CODE OF NEW YORK STATE

TO THE BEST OF THE KNOWLEDGE, BELIEF AND PROFESSIONAL JUDGMENT OF THE LICENSED PROFESSIONAL SEALING THESE PLANS AND SPECIFICATIONS, THESE PLANS AND SPECIFICATIONS ARE IN COMPLIANCE WITH THE 2020 FIRE CODE OF NEW YORK STATE.



WARNING:

THE ALTERATION OF THIS MATERIAL IN ANY WAY, UNLESS DONE UNDER THE DIRECTION OF A COMPARABLE PROFESSIONAL, I.E. ARCHITECT FOR AN ARCHITECT, ENGINEER FOR AN ENGINEER OR LANDSCAPE ARCHITECT FOR A LANDSCAPE ARCHITECT, IS A VIOLATION OF THE NEW YORK STATE EDUCATION LAW AND/OR REGULATIONS AND IS A CLASS "A" MISDEMEANOR.



CONTRACT:

CONSTRUCTION

TITLE:

PROVIDE FACILITY CLOSURE

LOCATION:

GOWANDA CORRECTIONAL FACILITY
S ROAD
GOWANDA, NEW YORK

CLIENT:

DEPARTMENT OF CORRECTIONS AND
COMMUNITY SUPERVISION

	5/17/2021	ADDENDA #2
	4/2/2021	BID DOCUMENT
MARK	DATE	DESCRIPTION
PROJECT NUMBER:	M3160	
DESIGNED BY:	CHAZEN	
DRAWN BY:	CHAZEN	
FIELD CHECK:		
APPROVED:		

SHEET TITLE:

CONSTRUCTION
LEGENDS, NOTES
& SCHEDULE

DRAWING NUMBER:

C-001

Building No.	Building Name	Building Closure Action
32	PROGRAM BUILDING	A, B, C
35	LAWN & GROUNDS	A, B, C
37	RECYCLING STORAGE	A, B, C
038A	GREENHOUSE (WEST)	A, B, C
038B	GREENHOUSE (EAST)	A, B, C
40	TRANSFORMER	A, B, C
61	MAINTENANCE/COMMISSARY	A, B, C
65	BUILDING "C" INMATE HOUSING	A, B, C
66	DISCIPLINARY	A, B, C
67	BUILDING "D" INMATE HOUSING	A, B, C
81	RECYCLING CENTER OFFICE	A, B, C
86	BLDGS "A" & "B" INMATE HOUSING	A, B, C
90	STADIUM	A, B, C
99	PROGRAMS	A, B, C
121	SPECIAL HOUSING UNIT	A, B, C
122	GUARD TOWER	A, B, C
123	ADMINISTRATION BUILDING	A, B, C
124	VISITOR BUILDING	A, B, C
125	REC. YARD #1 TOILET	A, B, C
127	REC. YARD #2 PAVILION	A, B, C
128	GUARD HOUSE	A, B, C
129	VISITOR'S PAVILION	A, B, C
133	REC. YARD #1 C.O. SHACK (WEST)	A, B, C
134	REC. YARD GUARD TOWER	A, B, C
135	REC. YARD GUARD TOWER	A, B, C
179	STORAGE – HORTICULTURE	A, B, C
180	GREENHOUSE	A, B, C
181	REC. YARD #1 GATE SHACK	A, B, C
182	REC. YARD #2 C.O. SHACK (EAST)	A, B, C
183	GROUNDS STORAGE	No action necessary
184	GROUNDS STORAGE	No action necessary
185	REC. STORAGE	A, B, C
186	REC. STORAGE	No action necessary
187	REC. YARD #2 C.O.	A, B, C
188	REC. YARD #2 C.O.	A, B, C
189	REC. YARD #2 C.O.	A, B, C
190	REC. YARD PAVILION	A, B, C
192	VISITOR'S PAVILION #2	A, B, C
193	COMPOST	A, B, C
194	S.H.U. STORAGE	A, B, C
195	REC. YARD #2 C.O. SHACK	A, B, C
196	REC. YARD #2 PAVILION (WEIGHT AREA)	A, B, C
197	FRISK SHACK	A, B, C
198	REC. YARD #2 TOILET	A, B, C
201	TRAINING CENTER (OFF CAMPUS)	A, B, C
202	PAVILION (OFF CAMPUS)	A, B, C
225	CONNECTING CORRIDORS	A, B, C
226	STEAM TUNNEL	A, B, C
227	GUARD SHACK	A, B, C
228	GUARD SHED	A, B, C
229	MAINTENANCE STORAGE	A, B, C
230	STORAGE SHED	No action necessary

E-CONTRACT BUILDING CLOSURE ACTIONS:

- A. EMERGENCY LIFE AND SAFETY SYSTEMS
- EMERGENCY LIFE AND SAFETY SYSTEMS INCLUDE THE FIRE ALARM, EMERGENCY LIGHTING, EXIT LIGHTS, AND KITCHEN HOOD SYSTEM. THESE SYSTEMS SHALL REMAIN ACTIVE AND FUNCTIONAL IN ALL BUILDINGS UNTIL ALL SERVICES TO A BUILDING ARE TURNED OFF, THE BUILDING HAS NO OCCUPANCY, AND NO COMBUSTIBLE STORAGE REMAINS IN THE BUILDING.
1. DEACTIVATE THE BUILDING EMERGENCY LIFE AND SAFETY SYSTEMS INCLUDING FIRE ALARMS, EMERGENCY LIGHTING, EXIT LIGHTING, AND KITCHEN HOOD/VENT SYSTEMS. DEACTIVATION INCLUDES TURNING SYSTEMS OFF AT THE BUILDING'S MAIN ELECTRICAL PANEL(S). REMOVE AND DISPOSE OF ANY BATTERY BACKUPS.
2. ONCE THE BUILDING EMERGENCY LIFE AND SAFETY SYSTEMS HAVE BEEN DEACTIVATED PROVIDE SIGNAGE INDICATING THE FOLLOWING "THIS BUILDING'S UTILITY SERVICE HAS BEEN DISCONNECTED AND FIRE PREVENTION SYSTEMS DISABLED." COORDINATE INSTALLATION OF SIGNAGE WITH C-CONTRACTOR AND DIRECTOR'S REPRESENTATIVE.
- B. LIGHTING
- BUILDING LIGHTS ARE TO BE DEACTIVATED. BATTERIES IN ANY EXIT LIGHTING AND EMERGENCY LIGHTING ARE TO BE REMOVED TO PREVENT POSSIBLE DAMAGE TO FIXTURES AND ELIMINATE POTENTIAL ENVIRONMENTAL CONCERNS.
1. REMOVE AND DISPOSE OF ALL BULBS FROM LIGHT FIXTURES. DO NOT REMOVE LED LIGHTS IF INTEGRAL TO THE FIXTURE.
2. REMOVE AND DISPOSE OF BATTERY BACKUPS FROM EXIT AND EMERGENCY LIGHTING.
3. TURN OFF ALL LIGHT SWITCHES.
4. TURN OFF ALL LIGHTS AT THE BUILDING'S MAIN ELECTRICAL PANEL(S).
- C. ELECTRICAL SYSTEMS
- DECOMMISSION AND ISOLATE THE ELECTRICAL SYSTEM.
1. TURN OFF MAIN POWER AT BUILDING MAIN DISCONNECT PANEL.
2. OPEN ALL DISCONNECTS AND BREAKERS IN BUILDING ELECTRICAL PANEL(S).
3. REMOVE ALL FUSES FROM BUILDING ELECTRICAL PANEL(S) AND DISPOSE OF OFFSITE.

E-CONTRACT SITE CLOSURE ACTIONS:

- SITE UTILITY SERVICES AND SYSTEMS INCLUDE ALL ELECTRICAL DISTRIBUTION SYSTEMS WHICH SERVICE BUILDINGS BEING DECOMMISSIONED AND ARE NO LONGER REQUIRED FOR SERVICE. THESE INCLUDE UNDERGROUND ELECTRICAL SERVICES TO BUILDINGS, BACKUP GENERATOR AND STREET LIGHTING.
- THE SITE CLOSURE ACTIONS BELOW ARE TO BE CLOSELY COORDINATED WITH THE DIRECTOR'S REPRESENTATIVE.
- D. ELECTRICAL DISTRIBUTION
- THE PRIMARY ELECTRICAL SERVICE AND THE EMERGENCY GENERATOR SYSTEM SERVING THE FACILITY BUILDINGS WILL BE DECOMMISSIONED.
1. THE SYSTEM WILL BE POWERED DOWN IN PHASES.
2. THE BACKUP EMERGENCY GENERATOR FOR GOWANDA CF IS PROVIDED BY EMERGENCY GENERATORS LOCATED AT COLLINS CF. TURN OF BREAKERS FOR THE EMERGENCY GENERATOR SYSTEM SUPPLYING THE GOWANDA CF SITE. COORDINATE WITH DIRECTOR'S REPRESENTATIVE FOR IDENTIFICATION OF APPROPRIATE BREAKERS.
3. PROVIDE TEMPORARY HEATING REQUIRED TO PREVENT CONDENSATION DURING THE SHUT DOWN PERIOD. COORDINATE WITH DIRECTOR'S REPRESENTATIVE.
4. BUILDINGS WITHOUT CENTRAL FIRE ALARMS ARE DECOMMISSIONED CAN BE POWERED DOWN AT THE ASSOCIATED BUILDING DISCONNECT.
5. POWER TO BUILDINGS WITH CENTRAL FIRE ALARM SYSTEMS MUST ALL BE POWERED DOWN AT THE SAME TIME. COORDINATE WITH DIRECTOR'S REPRESENTATIVE.
6. REMOVE MAIN DISTRIBUTION FUSES AT POWER DISTRIBUTION CENTER AFTER REMOVAL OF MAIN FUSES AT INDIVIDUAL BUILDINGS.
- E. EXTERIOR BUILDING, STREET, WALKWAY AND PERIMETER SECURITY LIGHTING
- THE EXTERIOR BUILDING, STREET, WALKWAY PERIMETER SECURITY LIGHTING WILL BE DEACTIVATED. COORDINATE CLOSELY WITH THE DIRECTOR'S REPRESENTATIVE SUCH THAT LIGHTING DECOMMISSIONING DOES NOT IMPACT COLLINS CF.
1. THE EXTERIOR BUILDING, STREET, WALKWAY PERIMETER SECURITY LIGHTING SYSTEMS SHALL BE DISABLED.
2. EXTERIOR BUILDING LIGHTING SHALL BE SHUT OFF AS INDIVIDUAL BUILDINGS ARE DECOMMISSIONED.
3. REMOVE HIGH PRESSURE SODIUM, MERCURY VAPOR, AND ANY EXTERNAL METAL HALIDE BULBS DISPOSED OF AS UNIVERSAL WASTE.
4. COORDINATE WITH DIRECTOR'S REPRESENTATIVE PRIOR TO DISABLING PERIMETER SECURITY LIGHTING.

1 E-CONTRACT CLOSURE TABULATION
SCALE: NTS



DESIGN & CONSTRUCTION

CONSULTANT
CHAZEN ENGINEERING, LAND SURVEYING
LANDSCAPE ARCHITECTURE CO., D.P.C.
JOB# 51964.04

ENERGY CODE COMPLIANCE WRITTEN STATEMENT:
TO THE BEST OF MY KNOWLEDGE, BELIEF AND PROFESSIONAL JUDGMENT, THE DRAWINGS BEARING MY PROFESSIONAL SEAL AND SIGNATURE MEET OR EXCEED THE 2020 ENERGY CONSERVATION CODE OF NEW YORK STATE
2020 FIRE CODE OF NEW YORK STATE
TO THE BEST OF THE KNOWLEDGE, BELIEF AND PROFESSIONAL JUDGMENT OF THE LICENSED PROFESSIONAL SEALING THESE PLANS AND SPECIFICATIONS, THESE PLANS AND SPECIFICATIONS ARE IN COMPLIANCE WITH THE 2020 FIRE CODE OF NEW YORK STATE.



WARNING:
THE ALTERATION OF THIS MATERIAL IN ANY WAY, UNLESS DONE UNDER THE DIRECTION OF A COMPARABLE PROFESSIONAL, I.E. ARCHITECT FOR AN ARCHITECT, ENGINEER FOR AN ENGINEER OR LANDSCAPE ARCHITECT FOR A LANDSCAPE ARCHITECT, IS A VIOLATION OF THE NEW YORK STATE EDUCATION LAW AND/OR REGULATIONS AND IS A CLASS "A" MISDEMEANOR.



CONTRACT: ELECTRICAL
TITLE: PROVIDE FACILITY CLOSURE
LOCATION: GOWANDA CORRECTIONAL FACILITY
S ROAD
GOWANDA, NEW YORK
CLIENT: DEPARTMENT OF CORRECTIONS AND COMMUNITY SUPERVISION

	5/17/2021	ADDENDA #2
	4/2/2021	BID DOCUMENT
MARK	DATE	DESCRIPTION
PROJECT NUMBER:	M3160	
DESIGNED BY:	CHAZEN	
DRAWN BY:	CHAZEN	
FIELD CHECK:		
APPROVED:		
SHEET TITLE:		
ELECTRICAL LEGENDS, NOTES & SCHEDULE		
DRAWING NUMBER:		
E-001		

Building No.	Building Name	Building Closure Action
32	PROGRAM BUILDING	A, B
35	LAWN & GROUNDS	A, B
37	RECYCLING STORAGE	A, B
038A	GREENHOUSE (WEST)	A
038B	GREENHOUSE (EAST)	A
40	TRANSFORMER	No action necessary
61	MAINTENANCE/COMMISSARY	A, B, drain steam boilers
65	BUILDING "C" INMATE HOUSING	A, B, drain steam boilers
66	DISCIPLINARY	A, B, drain steam boilers
67	BUILDING "D" INMATE HOUSING	A, B, drain steam boilers
81	RECYCLING CENTER OFFICE	A, B
86	BLDGS "A" & "B" INMATE HOUSING	A, B, drain steam boilers
90	STADIUM	A, B
99	PROGRAMS	A, B
121	SPECIAL HOUSING UNIT	A, B
122	GUARD TOWER	A, B
123	ADMINISTRATION BUILDING	A, B
124	VISITOR BUILDING	A, B
125	REC. YARD #1 TOILET	A, B
127	REC. YARD #2 PAVILION	No action necessary
128	GUARD HOUSE	A, B
129	VISITOR'S PAVILION	No action necessary
133	REC. YARD #1 C.O. SHACK (WEST)	No action necessary
134	REC. YARD GUARD TOWER	A, B
135	REC. YARD GUARD TOWER	A, B
179	STORAGE -- HORTICULTURE	No action necessary
180	GREENHOUSE	A
181	REC. YARD #1 GATE SHACK	A, B
182	REC. YARD #2 C.O. SHACK (EAST)	No action necessary
183	GROUNDS STORAGE	No action necessary
184	GROUNDS STORAGE	No action necessary
185	REC. STORAGE	No action necessary
186	REC. STORAGE	No action necessary
187	REC. YARD #2 C.O.	No action necessary
188	REC. YARD #2 C.O.	No action necessary
189	REC. YARD #2 C.O.	No action necessary
190	REC. YARD PAVILION	No action necessary
192	VISITOR'S PAVILION #2	No action necessary
193	COMPOST	No action necessary
194	S.H.U. STORAGE	No action necessary
195	REC. YARD #2 C.O. SHACK	No action necessary
196	REC. YARD #2 PAVILION (WEIGHT AREA)	No action necessary
197	FRISK SHACK	A, B
198	REC. YARD #2 TOILET	A, B
201	TRAINING CENTER (OFF CAMPUS)	A, B, drain steam boilers
202	PAVILION (OFF CAMPUS)	No action necessary
225	CONNECTING CORRIDORS	A, B
226	STEAM TUNNEL	A, B
227	GUARD SHACK	No action necessary
228	GUARD SHED	A, B
229	MAINTENANCE STORAGE	A, B
230	STORAGE SHED	No action necessary


1

H-CONTRACT CLOSURE TABULATION

SCALE: NTS

H-CONTRACT BUILDING CLOSURE ACTIONS:


- A. HVAC SYSTEMS
- DECOMMISSION THE HVAC SYSTEMS WITHIN EACH BUILDING.
- TURN OFF ALL HVAC SYSTEMS.
 - FOR BUILDINGS THAT UTILIZE HOT WATER SYSTEMS, THESE SYSTEMS SHOULD BE DRAINED OR IF NOT PRACTICAL, NON-TOXIC ANTIFREEZE SHOULD BE ADDED TO PROTECT THE SYSTEMS DOWN TO MINUS 50 DEGREE BURST TEMPERATURE. COMPRESSED AIR SHOULD BE USED TO REMOVE THE MAJORITY OF THE WATER IN THE LINES.
 - VENTILATION EXHAUST FAN SYSTEMS SHALL BE SHUT DOWN, DISCONNECT AND CLOSE DAMPERS, ENSURE ALL DAMPERS ARE CLOSED TIGHTLY, ASSURE BIRD SCREENS ARE IN PLACE.
 - THE BOILERS WILL BE DRAINED, CLEANED, AND PREPARED FOR LONG TERM LAY UP.
 - SECURE OR BOARD ALL EXTERIOR LOUVERS AND CHIMNEYS.
 - COAT ALL EXPOSED METAL ON PUMPS WITH RUST INHIBITOR.
 - FOLLOW ALL FEDERAL, STATE, AND LOCAL LAWS FOR DISPOSAL OF WASTEWATER TREATED WITH BOILER CHEMICALS.
 - OBTAIN AND FOLLOW ALL BOILER MANUFACTURER RECOMMENDATIONS FOR LONG TERM STORAGE, AT MINIMUM, CLOSE AND SEAL ALL BOILER OPENINGS INCLUDING HANDHOLES AND MANHOLES, SHUT OFF ALL WATER/STEAM SUPPLY VALVES, CLOSE OFF ALL VENTS AND DAMPERS. LOCKOUT/TAGOUT UNITS AND PROVIDE MEANS FOR RUST INHIBITOR ON FIRESIDE OF BOILER EXCHANGER.
- B. REFRIGERATION SYSTEMS
- AIR CONDITIONING AND REFRIGERATION SYSTEMS AT THE FACILITY ARE COMPRISED OF KITCHEN REFRIGERATION, DOMESTIC TYPE REFRIGERATION, AND WINDOW AC UNITS. THE GOAL IS DECOMMISSION THE AIR CONDITIONING AND REFRIGERATION SYSTEMS WITHIN EACH BUILDING AND ELIMINATE ANY SITUATION THAT MAY RESULT IN POTENTIAL ENVIRONMENTAL HARM.
- REMOVAL ALL PORTABLE REFRIGERATION UNITS FROM THE FACILITY FOR REUSE AT OTHER FACILITIES OR FOR APPROPRIATE DISPOSAL. COORDINATE WITH THE DIRECTOR'S REPRESENTATIVE.
 - FIXED REFRIGERATION SYSTEMS SUCH AS COOLERS AND FREEZERS SHALL BE EVACUATED BY A CERTIFIED REFRIGERATION MECHANIC. REFRIGERANTS SHALL BE RECLAIMED AND REMOVED FROM THE SITE. THE SYSTEMS WILL BE FILLED WITH NITROGEN FOR LONG TERM STORAGE.
 - THE FACILITY'S REFRIGERANT PROGRAM WILL BE AMENDED TO REFLECT ANY CHANGES AND WILL THEN BE FILED FOR FUTURE REFERENCE. COOLERS AND FREEZERS SHOULD BE THOROUGHLY CLEANED AND DOORS LEFT OPEN TO PROVIDE AIR MOVEMENT. REMOVE ALL LOCKING HARDWARE AND LATCHES.



Office of
General Services


DESIGN & CONSTRUCTION

CONSULTANT

CHAZEN ENGINEERING, LAND SURVEYING
LANDSCAPE ARCHITECTURE CO., D.P.C.
JOB# 51964.04


ENERGY CODE COMPLIANCE WRITTEN STATEMENT:
TO THE BEST OF MY KNOWLEDGE, BELIEF AND PROFESSIONAL JUDGMENT, THE DRAWINGS BEARING MY PROFESSIONAL SEAL AND SIGNATURE MEET OR EXCEED THE 2020 ENERGY CONSERVATION CODE OF NEW YORK STATE

2020 FIRE CODE OF NEW YORK STATE
TO THE BEST OF THE KNOWLEDGE, BELIEF AND PROFESSIONAL JUDGMENT OF THE LICENSED PROFESSIONAL SEALING THESE PLANS AND SPECIFICATIONS, THESE PLANS AND SPECIFICATIONS ARE IN COMPLIANCE WITH THE 2020 FIRE CODE OF NEW YORK STATE.



ORIGINAL SCALE IN INCHES

WARNING:
THE ALTERATION OF THIS MATERIAL IN ANY WAY, UNLESS DONE UNDER THE DIRECTION OF A COMPARABLE PROFESSIONAL, I.E. ARCHITECT FOR AN ARCHITECT, ENGINEER FOR AN ENGINEER OR LANDSCAPE ARCHITECT FOR A LANDSCAPE ARCHITECT, IS A VIOLATION OF THE NEW YORK STATE EDUCATION LAW AND/OR REGULATIONS AND IS A CLASS "A" MISDEMEANOR.



CONTRACT:

MECHANICAL

TITLE:

PROVIDE FACILITY CLOSURE

LOCATION:

GOWANDA CORRECTIONAL FACILITY
S ROAD
GOWANDA, NEW YORK

CLIENT:

DEPARTMENT OF CORRECTIONS AND
COMMUNITY SUPERVISION

	5/17/2021	ADDENDA #2
	4/2/2021	BID DOCUMENT
MARK	DATE	DESCRIPTION
PROJECT NUMBER:	M3160	
DESIGNED BY:	CHAZEN	
DRAWN BY:	CHAZEN	
FIELD CHECK:		
APPROVED:		
SHEET TITLE:		
MECHANICAL LEGENDS, NOTES & SCHEDULE		
DRAWING NUMBER:		
M-001		

Building No.	Building Name	Building Closure Action
32	PROGRAM BUILDING	A, B, C, D
35	LAWN & GROUNDS	A, B, C, D
37	RECYCLING STORAGE	No action necessary
038A	GREENHOUSE (WEST)	No action necessary
038B	GREENHOUSE (EAST)	No action necessary
40	TRANSFORMER	No action necessary
61	MAINTENANCE/COMMISSARY	A, B, C, D
65	BUILDING "C" INMATE HOUSING	A, B, C, D
66	DISCIPLINARY	A, B, C, D
67	BUILDING "D" INMATE HOUSING	A, B, C, D
81	RECYCLING CENTER OFFICE	A, B, C, D
86	BLDGS "A" & "B" INMATE HOUSING	A, B, C, D
90	STADIUM	No action necessary
99	PROGRAMS	A, B, C, D
121	SPECIAL HOUSING UNIT	A, B, C, D
122	GUARD TOWER	A, B, C, D
123	ADMINISTRATION BUILDING	A, B, C, D
124	VISITOR BUILDING	A, B, C, D
125	REC. YARD #1 TOILET	A, D
127	REC. YARD #2 PAVILION	No action necessary
128	GUARD HOUSE	A, D
129	VISITOR'S PAVILION	No action necessary
133	REC. YARD #1 C.O. SHACK (WEST)	No action necessary
134	REC. YARD GUARD TOWER	No action necessary
135	REC. YARD GUARD TOWER	No action necessary
179	STORAGE – HORTICULTURE	No action necessary
180	GREENHOUSE	A, D
181	REC. YARD #1 GATE SHACK	No action necessary
182	REC. YARD #2 C.O. SHACK (EAST)	No action necessary
183	GROUND'S STORAGE	No action necessary
184	GROUND'S STORAGE	No action necessary
185	REC. STORAGE	No action necessary
186	REC. STORAGE	No action necessary
187	REC. YARD #2 C.O.	No action necessary
188	REC. YARD #2 C.O.	No action necessary
189	REC. YARD #2 C.O.	No action necessary
190	REC. YARD PAVILION	No action necessary
192	VISITOR'S PAVILION #2	No action necessary
193	COMPOST	No action necessary
194	S.H.U. STORAGE	No action necessary
195	REC. YARD #2 C.O. SHACK	No action necessary
196	REC. YARD #2 PAVILION (WEIGHT AREA)	No action necessary
197	FRISK SHACK	No action necessary
198	REC. YARD #2 TOILET	A, D
201	TRAINING CENTER (OFF CAMPUS)	No action necessary
202	PAVILION (OFF CAMPUS)	No action necessary
225	CONNECTING CORRIDORS	No action necessary
226	STEAM TUNNEL	No action necessary
227	GUARD SHACK	No action necessary
228	GUARD SHED	No action necessary
229	MAINTENANCE STORAGE	No action necessary
230	STORAGE SHED	No action necessary

P–CONTRACT BUILDING CLOSURE ACTIONS:

A. POTABLE WATER SYSTEMS

THE GOAL OF DECOMMISSIONING IS FULLY DISCONNECT THE EXISTING POTABLE WATER WATER PLUMBING PIPING, FIXTURES, AND EQUIPMENT WITHIN THE EACH BUILDING.

- WATER SYSTEMS WILL BE PLACED IN AN INACTIVE STATE ONCE ALL OTHER UTILITIES HAVE BEEN DISCONNECTED, COMBUSTIBLE STORAGE HAS BEEN REMOVED, AND FIRE PROTECTION IS NO LONGER NECESSARY.
- DISCONNECT AND REMOVE THE FIRST WATER SYSTEM COMPONENT (I.E. VALVE, BACKFLOW PREVENTER, METER, ETC.) ENTERING THE BUILDING TO PHYSICALLY DISCONNECT FROM THE FACILITY WATER DISTRIBUTION SYSTEM.
- DRAIN ALL INTERIOR WATER PIPING AND APPURTENANCES. DRAINING SHALL BE ACCOMPLISHED BY OPENING ALL INTERIOR/EXTERIOR FIXTURES AND UTILIZING COMPRESSED AIR TO AID IN WATER REMOVAL.
- CLOSE SUPPLY VALVES AND DRAIN ALL HOT WATER HEATERS. FOLLOW MANUFACTURER'S LONG TERM STORAGE RECOMMENDATIONS FOR DOMESTIC WATER HEATERS AFTER DRAINAGE. LOCKOUT/TAGOUT ALL WATER HEATERS. COORDINATE WITH DIRECTOR'S REPRESENTATIVE.
- COORDINATE WITH THE C–CONTRACTOR TO VERIFY THAT EXTERIOR WATER SERVICES ARE CUT/CAPPED TO EACH BUILDING. ENSURE THAT ALL INTERIOR WATER PIPING/PLUMBING COMPONENTS ARE DRAINED OF WATER TO PREVENT FREEZING.
- DO NOT REMOVE COPPER PIPING FROM BUILDING INTERIORS.

B. FIRE PROTECTION WATER SYSTEM

THE GOAL OF DECOMMISSIONING IS FULLY DISCONNECT THE EXISTING FIRE PROTECTION WATER PLUMBING PIPING, FIXTURES, AND EQUIPMENT WITHIN THE EACH BUILDING. COORDINATE WITH THE DIRECTOR'S REPRESENTATIVE WHEN READY TO DECOMMISSION THE FIRE PROTECTION SYSTEM IN EACH BUILDING. COORDINATE WITH E–CONTRACTOR FOR WORK ASSOCIATED WITH THE FIRE ALARM SYSTEM WHEN DECOMMISSIONING THE FIRE PROTECTION WATER SYSTEM.

- DISCONNECT MAIN CONTROL VALVES AND ALARM DEVICES, BACKFLOW PREVENTION DEVICES, ALARM VALVES.
- PROVIDE SIGNAGE ON FIRE DEPARTMENT CONNECTION INDICATING THAT FIRE SYSTEM IS OUT OF SERVICE.
- ALL PENDENT SPRINKLER HEADS SHALL BE REMOVED ON SPRINKLER DROPS, IF APPLICABLE.
- DRAIN ALL LOW POINTS AND LEAVE LOW POINT DRAINS IN THE OPEN POSITION.
- USE COMPRESSED AIR TO BLOW OUT ALL RESIDUAL WATER.
- EXISTING SYSTEMS ABANDONED IN PLACE.

C. FIRE SUPPRESSION SYSTEMS

THE GOAL OF THE DECOMMISSIONING PROCESS IS TO FULLY DISCONNECT THE FIRE SUPPRESSION SYSTEMS IN EACH BUILDING.

- IT IS ANTICIPATED THAT DOCCS WILL REMOVE ANY PORTABLE FIRE EXTINGUISHERS. COORDINATE THE REMOVAL OF ANY REMAINING PORTABLE FIRE EXTINGUISHERS AND DISPOSE OF OFFSITE.
- DISCONNECT ANY ANSUL FIRE SUPPRESSION SYSTEMS AND DECOMMISSION PER MANUFACTURER'S RECOMMENDATIONS. DISPOSE OF ANY CHEMICALS OFFSITE AND IN ACCORDANCE WITH FEDERAL, STATE, AND LOCAL REQUIREMENTS.

D. SANITARY SEWER SYSTEMS

THE GOAL OF THE DECOMMISSIONING PROCESS IS TO FULLY DISCONNECT THE SANITARY SEWER SYSTEM OF EACH BUILDING.

- ALL SANITARY SEWER SYSTEM COMPONENTS (INCLUDING FLOOR DRAINS) MUST BE FREE OF WATER AS ALL BUILDINGS WILL BE UNHEATED.
- REMOVE TRAPS AND DRAIN WHEREVER POSSIBLE. CAP PIPING WHERE TRAPS ARE REMOVED.
- FIXTURES WITH INTERNAL TRAPS SUCH AS TOILETS AND FLOOR DRAINS MUST HAVE NON TOXIC ANTIFREEZE (PROPYLENE GLYCOL) ADDED TO PREVENT FREEZING AND PREVENT THE RELEASE OF SEWER GASES INTO THE BUILDING.
- PROVIDE TRAP SEAL FOR ALL FLOOR DRAINS AND FLOOR SINKS WHERE TRAP REMOVAL IS NOT POSSIBLE TO PREVENT GAS ESCAPE. PRODUCT SIMILAR TO SURE SEAL.

1

P-CONTRACT CLOSURE TABULATION

SCALE: NTS



Office of
General Services

DESIGN & CONSTRUCTION

CONSULTANT

CHAZEN ENGINEERING, LAND SURVEYING

LANDSCAPE ARCHITECTURE CO., D.P.C.

JOB# 51964.04

ENERGY CODE COMPLIANCE WRITTEN STATEMENT:

TO THE BEST OF MY KNOWLEDGE, BELIEF AND PROFESSIONAL JUDGMENT, THE DRAWINGS BEARING MY PROFESSIONAL SEAL AND SIGNATURE MEET OR EXCEED THE 2020 ENERGY CONSERVATION CODE OF NEW YORK STATE

2020 FIRE CODE OF NEW YORK STATE

TO THE BEST OF THE KNOWLEDGE, BELIEF AND PROFESSIONAL JUDGMENT OF THE LICENSED PROFESSIONAL SEALING THESE PLANS AND SPECIFICATIONS, THESE PLANS AND SPECIFICATIONS ARE IN COMPLIANCE WITH THE 2020 FIRE CODE OF NEW YORK STATE.



WARNING:

THE ALTERATION OF THIS MATERIAL IN ANY WAY, UNLESS DONE UNDER THE DIRECTION OF A COMPARABLE PROFESSIONAL, I.E. ARCHITECT FOR AN ARCHITECT, ENGINEER FOR AN ENGINEER OR LANDSCAPE ARCHITECT FOR A LANDSCAPE ARCHITECT, IS A VIOLATION OF THE NEW YORK STATE EDUCATION LAW AND/OR REGULATIONS AND IS A CLASS "A" MISDEMEANOR.



CONTRACT:

PLUMBING

TITLE:

PROVIDE FACILITY CLOSURE

LOCATION:

GOWANDA CORRECTIONAL FACILITY
S ROAD
GOWANDA, NEW YORK

CLIENT:

DEPARTMENT OF CORRECTIONS AND
COMMUNITY SUPERVISION

	5/17/2021	ADDENDA #2
	4/2/2021	BID DOCUMENT
MARK	DATE	DESCRIPTION
PROJECT NUMBER:	M3160	
DESIGNED BY:	CHAZEN	
DRAWN BY:	CHAZEN	
FIELD CHECK:		
APPROVED:		

SHEET TITLE:

PLUMBING & FIRE
PROTECTION LEGENDS,
NOTES & SCHEDULE

DRAWING NUMBER:

P–001/FP–001