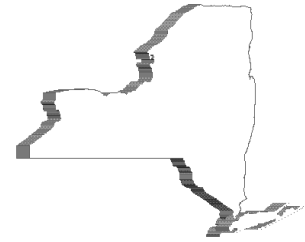




STATE OF NEW YORK
OFFICE OF GENERAL SERVICES
DESIGN AND CONSTRUCTION GROUP
THE GOVERNOR NELSON A. ROCKEFELLER
EMPIRE STATE PLAZA
ALBANY, NY 12242



ADDENDUM NO. 1 TO PROJECT NO. Q1550

**CONSTRUCTION WORK
WATER LINE IMPROVEMENTS BLDG. 115
ALBION CORRECTIONAL FACILITY
3595 STATE SCHOOL ROAD
ALBION, ORLEANS COUNTY, NY**

May 29, 2012

NOTE: This Addendum forms a part of the Contract Documents. Insert it in the Project Manual.
Acknowledge receipt of this Addendum in the space provided on the Bid Form.

Drawings:

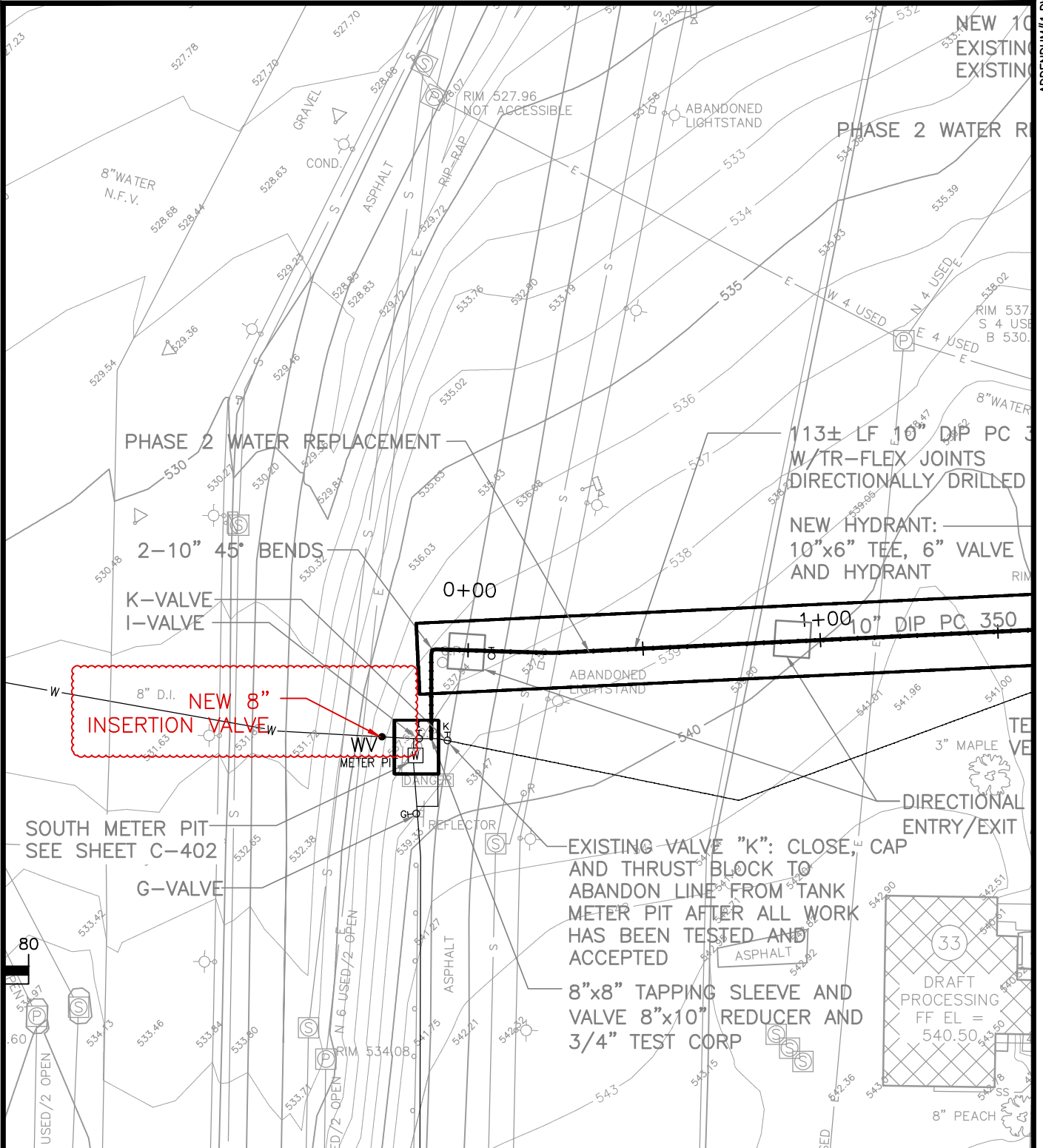
1. Drawing C-402, Detail 3/C-402, delete Note No. 4 in its entirety.
2. Drawing C-101, Add the following Note, *“Behind housing A-Block there are four 20 foot high street lighting poles (including conduit & wire) that are located directly over or adjacent to the existing waterline. The Contractor will be required to support these light poles or remove and replace.”*

Addendum Drawings:

1. Add Addendum Drawing “Orleans Insertion Valve, Sketch Number 1.”
2. Add Addendum Drawing “PIV At Program Building, Sketch Number 2.”

END OF ADDENDUM

James Dirolf, P.E.
Director of Design



APPENDUM#1.DWG
CAD DWG FILE NAME

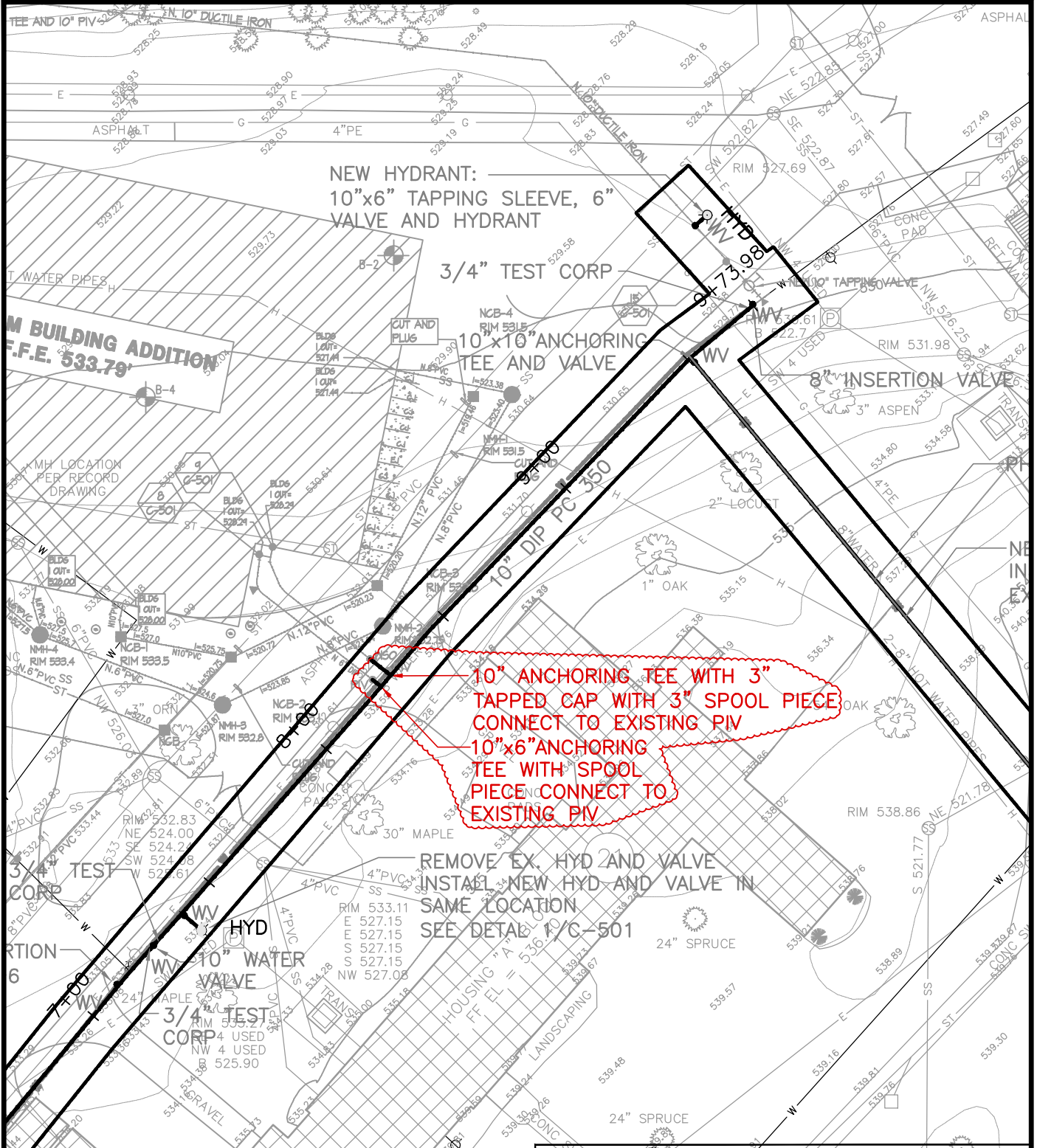


C.T. MALE ASSOCIATES
 50 CENTURY HILL DRIVE
 LATHAM, NY 12110
 518.786.7400 * FAX 518.786.7299
 ENGINEERING, SURVEYING, ARCHITECTURE &
 LANDSCAPE ARCHITECTURE, P.C.

ADDENDUM # 1	
SHEET TITLE: ORLEANS INSERTION VALVE SKETCH NUMBER-1	
PROJECT: WATER LINE IMPROVEMENTS BLDG. 115	
WARNING: THE ALTERATION OF THIS MATERIAL IN ANY WAY, UNLESS DONE UNDER THE DIRECTION OF A COMPARABLE PROFESSIONAL, I.E. ARCHITECT FOR AN ARCHITECT, ENGINEER FOR AN ENGINEER OR LANDSCAPE ARCHITECT FOR A LANDSCAPE ARCHITECT, IS A VIOLATION OF THE NEW YORK STATE EDUCATION LAW AND/OR REGULATIONS AND IS A CLASS 'A' MISDEMEANOR.	SHEET 1 OF 2

CONTRACT: CONSTRUCTION
PROJ. NO: Q1550-C
DATE: 05/21/2012
DRAWN: JQE
APPROVED: DPR

© 2012
 C.T. MALE ASSOCIATES, P.C.
 CTM PROJ. NO: 08.8205
 CTM DWG. NO: 10-0516



10" ANCHORING TEE WITH 3" TAPPED CAP WITH 3" SPOOL PIECE CONNECT TO EXISTING PIV
 10"x6" ANCHORING TEE WITH SPOOL PIECE CONNECT TO EXISTING PIV

REMOVE EX. HYD AND VALVE
 INSTALL NEW HYD AND VALVE IN SAME LOCATION
 SEE DETAIL 1/C-501

ADDENDUM # 1

SHEET TITLE: PIV AT PROGRAM BUILDING SKETCH NUMBER-2

PROJECT: WATER LINE IMPROVMENTS BLDG. 115

WARNING: THE ALTERATION OF THIS MATERIAL IN ANY WAY, UNLESS DONE UNDER THE DIRECTION OF A COMPARABLE PROFESSIONAL, I.E. ARCHITECT FOR AN ARCHITECT, ENGINEER FOR AN ENGINEER OR LANDSCAPE ARCHITECT FOR A LANDSCAPE ARCHITECT, IS A VIOLATION OF THE NEW YORK STATE EDUCATION LAW AND/OR REGULATIONS AND IS A CLASS 'A' MISDEMEANOR.



C.T. MALE ASSOCIATES
 50 CENTURY HILL DRIVE
 LATHAM, NY 12110
 518.786.7400 * FAX 518.786.7299
 ENGINEERING, SURVEYING, ARCHITECTURE & LANDSCAPE ARCHITECTURE, P.C.

© 2012
 C.T. MALE ASSOCIATES, P.C.
 CTM PROJ. NO: 08.8205
 CTM DWG. NO: 10-0516

CONTRACT: CONSTRUCTION
 PROJ. NO: Q1550-C
 DATE: 05/21/2012
 DRAWN: JQE
 APPROVED: DPR